

Late Pleistocene Humans used Rice in Sri Lanka: Phytolith Investigation of the Deposits at Fahien Rock Shelter

Rathnasiri Premathilake¹ and Chris O. Hunt²

¹ Postgraduate Institute of Archaeology

Received: 13 December 2016 Accepted: 31 December 2016 Published: 15 January 2017

Abstract

Phytolith (microscopic plant silicate bodies) evidence suggests that anatomically modern humans lived at Fahien rock shelter in the south-western Sri Lanka intensively used wild rice species (e.g. *Oryza cf. nivara*) in association with lowland rain forests from 48.35ka (48,350 calyrs BP). The intensive use of wild rice could be a local innovation

Index terms— fahien rock shelter; sediment; stratigraphy; phytoliths; rice; sri lanka.

1 Introduction

Domesticated rice (*Oryza sativa*) is one of the world's most important crops today. It is believed that early humans associated ancestors of domesticated rice (wild rice) before the appearance of domesticated rice in human cultures of South Asia from the early Pleistocene onwards (1). But, understanding the antiquity of the human usage of wild rice in the archaeological context remains in dispute due to lack of studies (1,2)(3)(4)(5)(6). The available rice data indicate that several independent geographical origins of rice domestication from their wild ancestors appear to have occurred in East and/or Southern Asia (7)(8)(9)(10)(11)(12)(13). Currently, the Yangtze valley in China has yielded the earliest evidence for the intensive use of wild rice during the Late Glacial (20 ka), with a transition to domestication early in the Holocene, around 9 ka (11), and evidence from the Ganges plains in North India indicates the use of wild rice from the post glacial time (15 ka), with a transition to domestication around 8 ka (12). In this paper, we report well-preserved rice phytolith evidence from the late Pleistocene archaeological context at the Fahien rock shelter in Sri Lanka which is indicative of the intensive use of wild rice species.

2 II.

3 Fahien rock Shelter

Fahien rock shelter, one of the largest rock shelters in Sri Lanka, is situated at E80° 12' 55" N6° 38' 55" at 130 m asl in Yatagampitiya village, near Bulathsinhala in the Kalutara District, southwest Sri Lanka (Fig. 1). The rock shelter has great potential for understanding the late Pleistocene humans and environment. It is a complex of interconnected rock shelters developed in coarse crystalline gneiss rock faces (14). The mouth has a width of 30 m and average height of 20 m above the floor. The interior is about 10 m in depth and slopes down from west to east. The present day climate is warm-humid monsoonal, with an average rainfall around 3000-4000 mm/yr and a mean annual temperature at sea level about 26-27°C (15). The landscape around the rock shelter is characterized by disturbed lowland rainforest with paddy fields present in the slightly incised valley below the rock shelter (16,20).

4 III.

5 Material and Methods

6 a) Site Stratigraphy

Renewed excavation at the rock shelter yielded a secure chrono-stratigraphy for the earliest modern human habitation deposits (18)(19)(20) (21). This work led to the site being recognized as having, to date, the oldest archaeological sequence in Sri Lanka. Well preserved, in situ charcoal, charred wood, shells and sediment samples were taken from the sections for ^{14}C and OSL dating. Twenty six (26) radiocarbon dates were Abstract-Phytolith (microscopic plant silicate bodies) evidence suggests that anatomically modern humans lived at Fahien rock shelter in the south-western Sri Lanka intensively used wild rice species (e.g. *Oryza cf. nivara*) in association with lowland rain forests from 47.80ka (47,800 calyrs BP). The intensive use of wild rice could be a local innovation.

In 1968, W. J. Wijeyapala, the former Director General in the Department of Archaeological Survey of Sri Lanka (DAS) first examined Fahien and excavated over several seasons between 1986 and 2012 under the direction of the DAS. The depiction of litho logical succession with archaeological contexts at Fahien was made according to the standard tool, Harris Matrix. Excavation (4 x 5 m) located in the east of the main chamber of the Fahien rock shelter has indicated the potential for understanding of the archaeological stratigraphies (16)(17)(18)(19)(20). The excavation penetrated ca. 2.40 m of heterogeneous clast-rich loam sediments showing 5 major layers, 10 archaeological phases and approximately 250 archaeological contexts (Table 1). The bio-stratigraphy comprises of human bones, animal remains, burnt and unburnt shells, shell beads, charcoal, plant remains and coprolites. Human remains include several internments; some coated with red ochre and are associated with the first microlith and osseous technologies anywhere in South Asia. The stratigraphy also contains palaeo-floors, postholes, excavated pits and preserved hearths.

Rathnasiri Premathilake ?, Chris O. Hunt ?, Nimal Perera ? & Oshan Wedage ? produced using Accelerator Mass Spectrometry at the CHRONO centre, Queens University, Belfast and the Beta Analytic Laboratory in USA. They were calibrated using Calib 6.11 (22). Two sediment samples from the context 92 were processed using OSL and indicate that the base of the sequence is between 39.9 ± 2.5 ka (SUTL2327) and 22.0 ± 1.3 ka (SUTL2326) in age. Twenty six AMS dates obtained from charred seeds, charred wood, charcoal, *Canarium cf. zylanicum* nut and freshwater shells indicate that the period of sequence formation was between 47.80 ka and 3.85 ka. The most significant late Pleistocene archaeological evidence, which includes the oldest microlith toolkits known to South Asia associated with the contexts from 87 to 92 are dated to between 47.80 ka and 28.5 ka (Fig. ??).

7 b) Sediment processing for phytolith extraction

Twelve 30x10x8 cm monoliths were taken from the southern profile of the excavated area (Fig. ??). These covered five major layers (L1-L5) including the described archaeological phases (I-X) (Table 1, [18][19]). From these monoliths, seventeen subsamples were selected. Eleven subsamples (C-44 to C-86) of early to late Holocene age were taken from L2 and L3. Six of the subsamples (C-81 to C-92) were taken from L3/L4, L5 covering the late Pleistocene age (Fig. ??). The current work considers the late Pleistocene sample only. Phytolith extraction was made according the standard procedure (23).

8 c) Phytolith taxonomy and taphonomy

Classifications and taxonomic identification of phytoliths from archaeological samples were made using a modern and archaeological phytolith collections housed at the Laboratory for Palaeoecology, Postgraduate Institute of Archaeology, University of Kelaniya, Sri Lanka and at the French Institute of Pondicherry (IFP), India. In order to precisely identify rice taxa from the archaeological samples, comparative knowledge from multiple reference samples of phytoliths from a wide range of the parts (e.g. seeds/husks and leaves) of rice plants growing in different ecological and environmental contexts, both in Sri Lanka and Southern India was used. In this procedure, the most common morphological characteristics, general occurrence and appearance of key archaeological phytoliths were comparatively studied (21, 8-9, 13, 24-27).

IV.

9 Results

a) Phytoliths from the Late Pleistocene samples (47.80-12.15 ka) In this paper, we mainly highlight the rice phytolith records from late Pleistocene samples, while the detailed phytolith records from the sequence studied will be published elsewhere. The summary of the phytolith assemblages are shown in Fig. ?? All samples contained high counts of well-preserved phytoliths. A few samples yielded pitted, displayed a few relatively large micro-channels, mineralized micro-structures and broken phytoliths. More than 54 phytolith morphotypes (monocot and dicots) were identified. In this composition, wild rice (*spp*) and banana phytoliths are extremely abundant in the samples. Phytoliths from rice leaves (e.g. bulliforms and elongates) and seeds/husks/glumes (e.g. double and single peaked morphotypes) are closely comparable with modern material from the leaves and seeds/husks/glumes of from Sri Lanka and South India. In addition, phytoliths from several other economic plants, e.g. *Palmae*,

94 Artocarpus cf. nobilis (wild breadfruit), Duriosp and Poaceae (wild grasses) are found in all samples. Burseraceae
95 (Canarium sp. nut) and Cyperaceae phytoliths are found in several samples. Freshwater diatoms are common in
96 many samples. Few brackish/marine diatoms are limited to few samples.
97 V.

98 10 Discussion a) Reliability of the late Pleistocene samples and 99 phytoliths evidence

100 Fahien rock shelter sediments are heterogeneous and the archaeological analysis of the ca. 250 contexts indicates
101 complex sedimentary processes (18)(19)(20)(28). All dates of the late Pleistocene samples are in good stratigraphic
102 order. The chronology indicates that significant depositional hiatuses occur within the excavated
103 sequence between the late Pleistocene and early Holocene. Multiple hiatuses extended only from 29.9ka (C-87)
104 to 12.5 ka, marked by the reduction of phytolith sum (Fig. ??). These hiatuses can be explained by alternating
105 periods of desiccation and erosion of the rock shelter sediments. The condition of the desiccation corresponds
106 to the number of severe millennial to multi-century-scale dry climatic cycles (e.g. arid/semi-arid) due to
107 monsoon failures identified from the peat and sedimentary archives in Southern Asia between 24 ka and 8.1 ka
108 (29)(30)(31)(32)(33)(34)(35). The records suggest that the impact of climate, environmental conditions including
109 humans was the dominant factor for forming the litho-stratigraphy through the late Pleistocene.

110 Understanding phytolith taphonomy (a-e, described below) is essential for interpreting the rock shelter
111 phytoliths. The presence of phytoliths in the rock shelter sediments provides information about the depositional
112 processes in several ways (a) in situ plant decay leading to phytoliths deposition on surfaces (b) alluvial or colluvial
113 re-deposition of phytoliths along with their associated sediments (c) wind deposition (d) cultural deposition of
114 phytoliths through plant materials used by the occupants of the rock shelter for food and other cultural purposes
115 and (e) fossilization. The lack of living plants taxa such as rice, banana and Palms in the Oryza modern wild
116 rice, *Oryza rufipogon* and *Oryza nivara* rock shelter suggests a minimal input of in situ deposition of phytoliths.
117 Abundant phytoliths from these taxa in the samples suggest that alluvial and/or colluvial processes (effect of
118 horizontal and vertical movements) may have played a limited role in the phytolith redeposition. Due to the
119 presence of drip line, the impact of rain water penetration into the rock shelter is minimal. Wind deposition
120 is rare due to the particular geomorphology of the rock shelter in the humid tropical environment. This is
121 clearly confirmed by the highly variable phytolith counts/sum in all the samples (Fig. ??). Except for very
122 uppermost parts of the sequence (e.g. Holocene samples), a lack of the post-depositional disruptions through
123 roof falling, vertical cracks and animal burrows indicate limited vertical movement of phytoliths in the late
124 Pleistocene samples (18)(19). Indeed, the lack of evidence of root penetration from plants and the lack of organic
125 litter deposits within the clay- and silt-rich, highly-compacted and multi-layered sediments do not interfere with
126 phytoliths buried at much deeper stratigraphic levels through multiple reworking events and bioturbation. More
127 homogeneous distribution of the smallest phytoliths (3-10 μm) from wild banana seeds and from Bombacaceae
128 and fine-grained sediments in all the samples suggest the minimal impact of illuviation of clay minerals as common
129 process in the rock shelter stratigraphy (28,(36)(37). All these minimized sources of biases indicate that spatial
130 and temporal fidelity is high in the late Pleistocene samples (38).

131 The main process, therefore, of phytolith deposition in the rock shelter is most likely to have been through
132 human or animal vectors. However, animals such as bats, birds, and insects in the vicinity of the rock shelter
133 environment are very unlikely to play a role in the phytolith deposition reported. This agrees with highly
134 variable phytolith counts through the sequence studied (39). It is inferred that humans are the most likely
135 agents for phytolith deposition in the rock shelter, -the materials from economic/anthropogenic plants such as rice
136 and banana and breadfruit brought into the rock shelter are from the plants commonly grown in disturbed
137 lowland rainforest near to the rock shelter (most possibly within a few kilometers at most). Abundant phytoliths
138 from monocotyledonous taxa (e.g. Poaceae/grasses and Cyperaceae/sedges) identified as anthropic taxa in this
139 context, probably associated the rice plants brought by humans. The significant occurrence of freshwater and
140 brackish-marine diatom species throughout is not surprising in habitation deposits and is consistent with a
141 number of human activities. In the majority of samples, abundant with rice seeds/husks and leaf phytoliths
142 together with the lack of taphonomic markers (e.g. breakage, corrosion, microchannels, regulation, dissolution
143 pits, mineralized microstructures, cut marks and pitted patterns) indicate excellent preservation conditions
144 and selective distribution of phytoliths from rice used by rock shelter occupants. This suggests high phytolith
145 compositional fidelity in the samples.

146 The well-preserved phytoliths suggest that they were directly subjected to the processes of diagenesis, i.e., physical
147 and chemical impact on phytoliths due to the long-time environmental burial (or buried for a long time) and
148 permanent incorporation into the rock shelter sediments (37,40,(41)(42)(43)(44)(45)(46)(47)(48)(49)(50)(51)(52)
149 ??53)(54). Alkaline conditions are also thought to contribute to phytolith dissolution processes (47, ??3,(55)(56)
150 due to the increase in solubility of silica at $\text{pH} > 7.8$. This impact on the iron (Fe) rich fine-grained Fahien rock
151 shelter sediments is limited as indicated by pH measurements (6.5-7.3) in all the sediment samples studied (57).
152 Facetate and sclereid phytoliths from woody dicotyledonous (e.g. forest taxa) are rare in the Late Pleistocene,
153 possibly due to dissolution (44), and/or less incorporation of phytoliths from woody materials. We report that
154 facetate and sclereids were unlikely to be preserved in much older samples (1).

11 b) Late Pleistocene wild rice exploitation

Late Pleistocene deposits yielded archaeological records (Table 1) and high amounts of phytoliths from economic plants. Phytolith records from the wild rice species, together with number of other economic plants (e.g. wild banana and breadfruit) suggests that rock shelter occupants have used wild rice plants, most probably for food and also for various other purposes, e.g. fuel, rituals medicines and artifacts. The methodological constraints used for rice identification confirm that phytoliths were from *Oryza nivara* and/or *O. rufipogon*, but the criteria used herewith, cannot fully separate the *rufipogon*, perennial from *nivara* annual ecotype.

12 c) Ecology of wild rice

Understanding the evidence related to ecology of wild rice provides an opportunity to explore the relationship between human activity and the presence of wild rice in the late Pleistocene. The ecology of the wild rice species clearly indicates differing modes of human exploitation of wild rice for food from the prehistoric period in South Asia (58)(59)(60)(61). The latter works suggest that *O. nivara*, which commonly grows in drylands and has a large-scale seed production could have been easily used by prehistoric hunter-gatherers without any serious cultivation whereas *O. rufipogon*, which is prominently grown in aquatic habitats has a much lower seed production during the very early stage of plant domestication, i.e. late Pleistocene (59)(60)(62)(63)(64). *O. nivara* rice tends to grow in relatively small isolated patches and not in stands of genetically uniform populations.

Prior to the Toba volcanic event ca. 74 ka years ago, humans at Jwalapuram, Locality 22, Southern Asia lived in a mixed woodland and grassland mosaic. This was followed by cooler and possibly drier conditions after the eruption (65). The elevated $\delta^{13}C$ and $\delta^{18}O$ from Batadomba-lena rock shelter (Fig. 1) faunal remains (66) and Himalayan ice cores (67) indicate that lowland rainforest of Southern Asia were more open with decreased canopy cover during the period 36-29 ka. This has been linked to decreased rainfall and temperature (68). Prior to the Last Glacial maximum (LGM), humid environments appear to have prevailed in the Indian subcontinent (69)(70)(71). Paleoclimatic records suggest that atmospheric cooling by 3-4 °C occurred in the Tropics (72), with a remarkable drop in precipitation during the LGM much greater than during any of the earlier (middle Pleistocene) glaciations (66). Palaeoclimate data from Sri Lanka suggest a drier LGM punctuated by climatic ameliorations in short bursts (73)(74). It is obvious that climatic fluctuations that includes prevailing prominent dry conditions in the Late Quaternary may have resulted in a number of climatically adapted wild rice populations (61,(75)(76). Rock shelter occupants could have easily modified *O. nivara* populations leading to more reliable wild grains for human use, especially when they were already widely growing in ideal habitats associated with prolonged dry conditions long before the domesticated forms arose (1,60,(77)(78)(79). During early rice exploitation, it is worth noting that high micro charcoal, phytolith and pollen records indicate regular anthropogenic burning from the Terminal (14.5-13 ka) and end of the Pleistocene through early-middle Holocene in the archaeological sites from Ganges plains in north India (80)(81). Several sites in the Yangtze valley in China, dating from 17 ka through the Terminal Pleistocene yielded *O. nivara* phytoliths in association with humans (11,(82)(83)(84)(85). Similarly, multi-proxy investigations (e.g. pollen, phytolith, charcoal, mineral magnetism, stable carbon and diatom) in the Horton Plains, Sri Lanka, suggest anthropogenic burning and disturbance in association with south west monsoon fluctuations from 17.5 ka through the late glacial time (31,35,75). In this ecological regime, phytoliths from *Oryza* were reported in association with dry climate between 15.9 -13.8 ka. All those records indicate that wild rice was present in human economies through the late Pleistocene to the Holocene in South and East Asia. This indicates that the rice species exploited by Fahien rock shelter occupants (i.e. late Pleistocene hunter-gatherers) was more likely *O. nivara* than *O. rufipogon*, adopting to the ecological/habitat, e.g. dry and mixed woodland and grassland conditions prevailed in the late Pleistocene (Fig. 4). The antiquity of human use of wild rice species, *O. nivara* at Fahien is remarkably as early as 48 ka, compared to the tradition of rice foraging in known Asian sites (77,86).

13 VI.

14 Conclusion Acknowledgments

Little is known of the use of wild rice in prehistoric Sri Lanka. Investigations from the archaeological sequence at Fahien rock shelter in south western Sri Lanka, dated to 47. ± 3.87¹

¹Year 2017 © 2017 Global Journals Inc. (US)

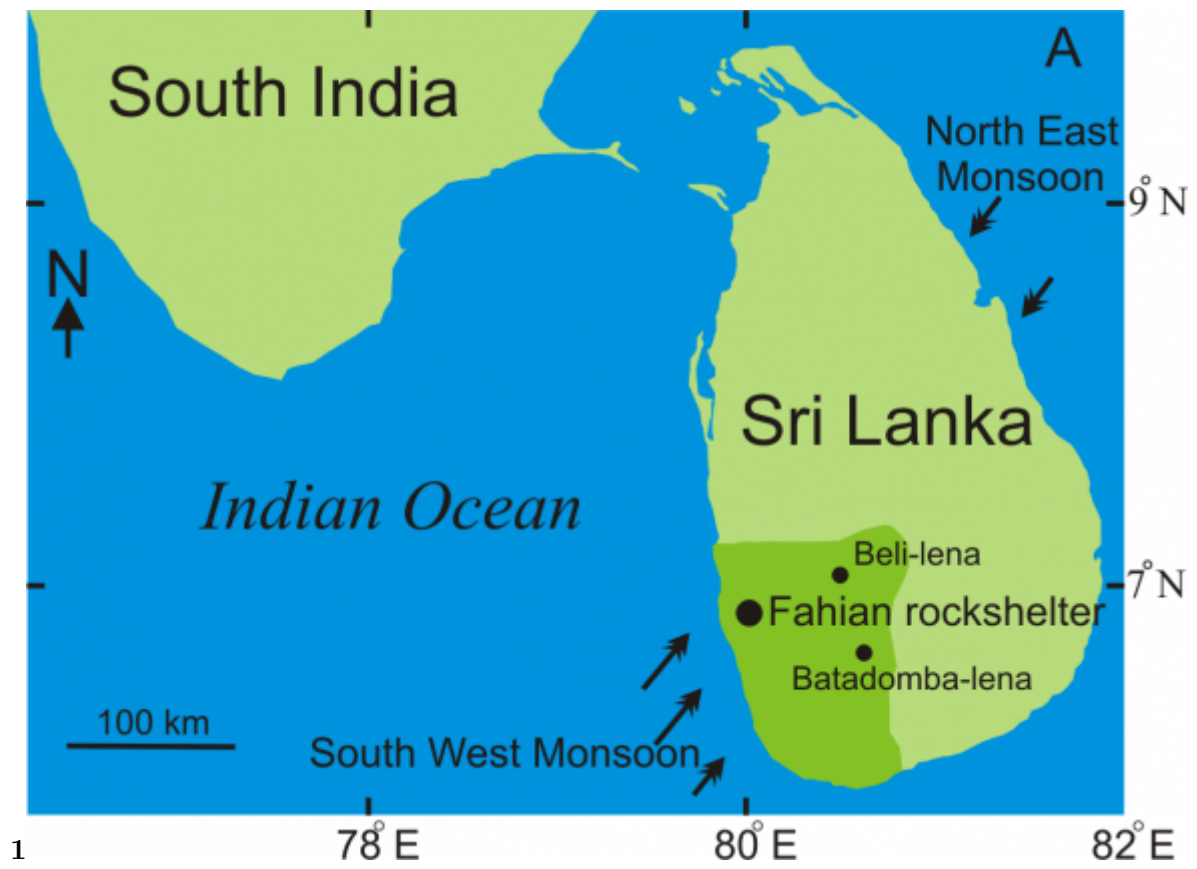
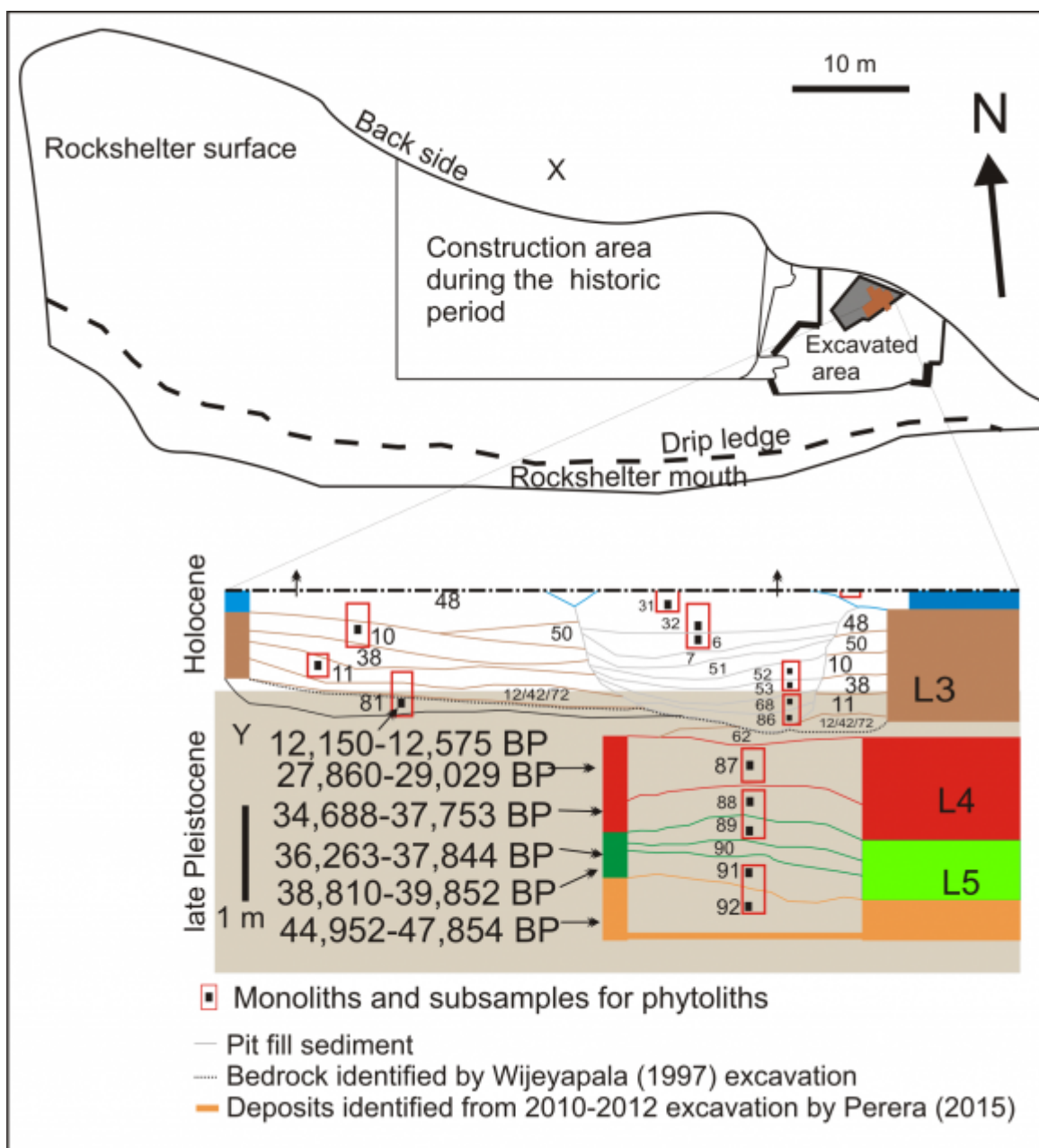
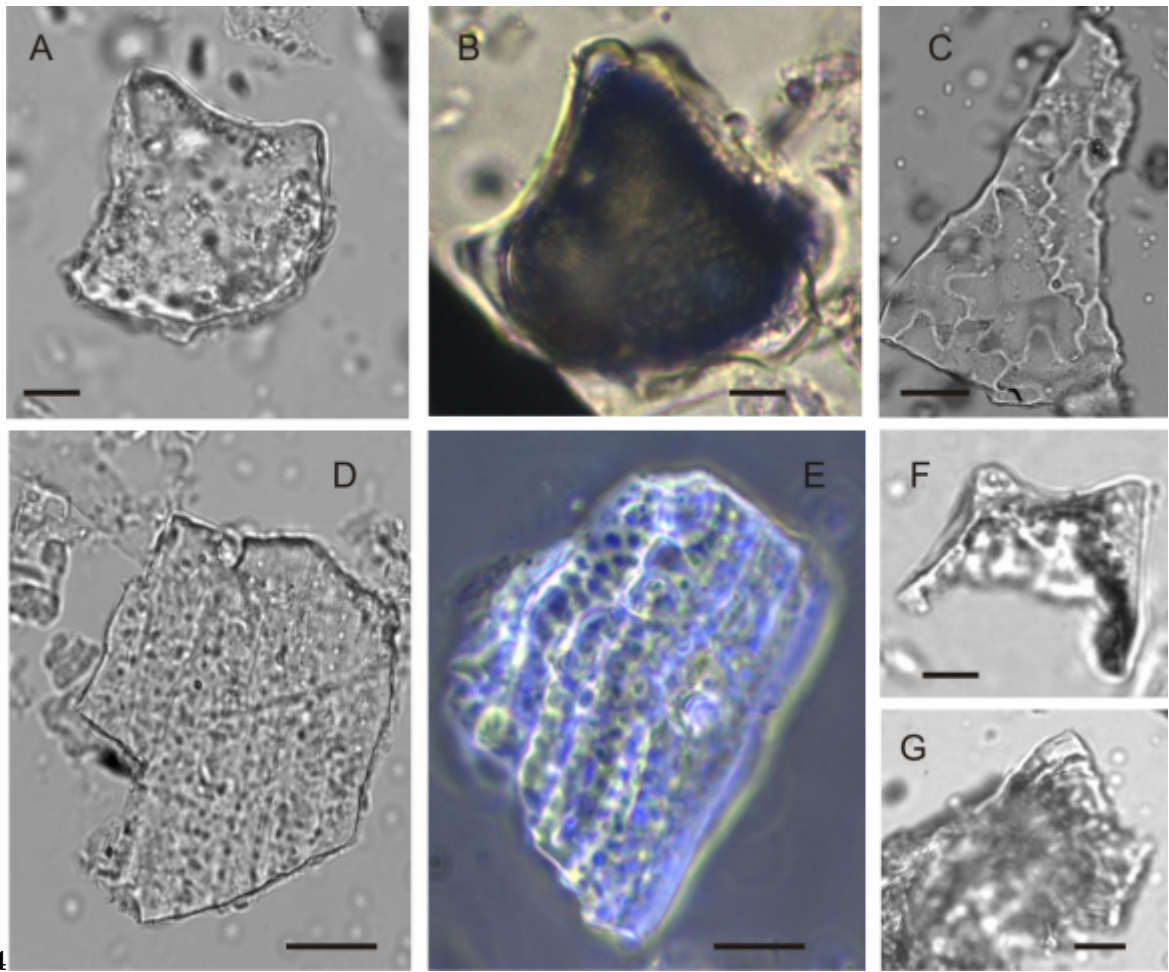


Figure 1: Fig. 1 :



23

Figure 2: Fig. 2 :Fig. 3 :



4

Figure 3: Fig. 4 .

Figure 4:

1

Cultural density
 and Archaeological Litho-stratigraphy Colour phases Bio-stratigraphy
 stratig-
 ra-
 phy
 de-
 scribed
 from
 the
 Fahien-
 rock-
 shel-
 ter.
 Bold
 font
 indi-
 cates
 the

NA Relatively low
 I II Consolidated clast-rich loam
 NA
 NA
 NA

of Contexts 95 92
 ar-
 chae-
 ol-
 ogy

Thickness (m)
 Layers(Wijeyapala (1997) NA 0.40
 Bed NA

Figure 5: Table 1 :

- 203 [Taphonomy in palaeoecological interpretations. *Quaternary Science Reviews*] , *Taphonomy in palaeoecological*
204 *interpretations. Quaternary Science Reviews* 30 p. 12961302.
- 205 [Behrensmeier et al. ()] , A K Behrensmeier , S M Kidwell , R A Gastaldo . *Taphonomy and Paleobiology* 2000.
206 26 (4) p. .
- 207 [Behrensmeier et al. ()] , A K Behrensmeier , S M Kidwell , R A Gastaldo . *Taphonomy and Paleobiology.*
208 *Paleobiology* 2000. 26 p. .
- 209 [Fernández-Jalvo et al. ()] , Y Fernández-Jalvo , L Scott , P Andrews . 2011.
- 210 [Lentfer and Boyd ()] ‘A comparison of three methods for the extraction of phytolith from sediments’. C J Lentfer
211 , W E Boyd . *Journal of Archaeological Science* 1998. 25 p. .
- 212 [Thompson et al. ()] ‘A high-resolution millennial record of the South Asian Monsoon from Himalayan ice cores’.
213 L G Thompson , T Yao , E Mosley-Thompson , M E Davis , K A Henderson , P.-N Lin . *Science* 2000. 289
214 p. .
- 215 [Haslam et al. ()] ‘A southern Indian Middle Palaeolithic occupation surface sealed by the 74 ka Toba eruption:
216 further evidence from Jwalapuram Locality 22’. M Haslam , C Clarkson , R G Roberts , J Bora , R Korisettar
217 , P Ditchfield , A R Chivas , C Harris , V Smith , A Oh , S Eksambekar , N Boivin , M Petraglia . *Quaternary*
218 *International* 2012. 258 p. .
- 219 [Fuller et al. ()] ‘Across the Indian Ocean: the prehistoric movement of plants and animals’. D Q Fuller , N
220 Boivin , T Hoogervorst , R Allaby . *Antiquity* 2011b. 85 p. .
- 221 [Claridge et al. ()] ‘Adaptation of brown plantho (*Nilaparvatalugens*) populations to rice varieties in Sri Lanka’.
222 M F Claridge , J Denhollander , I Furet . 10.1111/j.1570-7458.1982.tb03209.x. *Entomologia Experimentaliset*
223 *Applicata* 1982. 32 p. .
- 224 [Patnaik et al. ()] ‘Additional vertebrate remains from one of the late Pleistocene-Holocene Kurnool caves
225 (MuchchatlaChintamanuGavi) of South India’. R Patnaik , G L Badam , MlK Murty . *Quaternary*
226 *International* 2008. 192 p. .
- 227 [Fuller ()] ‘Agricultural origins and frontiers in South Asia: a working synthesis’. D Q Fuller . *Journal of World*
228 *Prehistory* 2006. 20 p. .
- 229 [Alexandre et al. ()] A Alexandre , I Basile-Doelsch , T Delhaye , Borshneckd , J C Mazur , Santosgm Reyersonp
230 . *New highlights of phytolith structure and occluded carbon location: 3-D X-ray microscopy and NanoSIMS*
231 *results*, 2015. 12 p. .
- 232 [An archaeological assessment The Holocene] ‘An archaeological assessment’. *The Holocene* 21 (5) p. .
- 233 [Cooray ()] *An introduction to the Geology of Sri Lanka*, P G Cooray . 1984. Colombo: National Museum
234 Publications.
- 235 [Frayse ()] ‘Aqueous reactivity of phytoliths and plant litter: physico-chemical constraints on terrestrial
236 biogeochemical cycle of silicon’. F Fraysse . *Journal of Geochemical* 2006. 88 p. .
- 237 [Vaughan and Morishima ()] ‘Biosystemetics of the Genus *Oryza*’. D A Vaughan , H Morishima . *Rice origins,*
238 *history, technology and production*, C W Smith, R H Dilday (ed.) (New Jersey) 2003. John Wiley and Sons
239 Inc. p. .
- 240 [Butzer ()] ‘Challenges for a crossdisciplinary geoarchaeology: The intersection between environmental history
241 and geomorphology’. K W Butzer . *Geomorphology* 2008. 101 p. .
- 242 [Premathilake and Gunathilaka ()] ‘Chronological framework of Asian Southwest Monsoon events and variations
243 over the past 24,000 years in Sri Lanka and regional correlation’. R Premathilake , A Gunathilaka . *Journal*
244 *of Natural Science Foundation Sri Lanka* 2013. 41 (3) p. .
- 245 [Fuller et al. ()] ‘Consilience of genetics and archaeobotany in the entan-gled history of rice’. D Q Fuller , Y-I
246 Sato , C Castillo , L Qin , A R Weisskopf , E J Kingwell-Banham , J Song . *Archaeological and Anthropological*
247 2010. 2 (2) p. .
- 248 [Fuller et al. ()] ‘Consilience of genetics and archaeobotany in the entan-gled history of rice’. D Q Fuller , Y-I
249 Sato , C Castillo , L Qin , A R Weisskopf , E J Kingwell-Banham , J Song . *Archaeological and Anthropological*
250 2010. 2 (2) p. .
- 251 [Loucaides et al. ()] ‘Dissolution of biogenic silica from land to ocean: role of salinity and pH’. S Loucaides , P
252 Van Cappellen , T Behrends . *Limnology Oceanography* 2008. 53 p. .
- 253 [Zhao et al. ()] ‘Distinguishing Rice (*Oryza sativa*: Poaceae) from Wild *Oryza* Species through PhytolithAnall-
254 ysis’. Z Zhao , D M Pearsall , R A Benferjr , D R Piperno . *II: Finalzed Methods. Economic Botany* 1998. 52
255 p. .
- 256 [Chi ()] ‘Early pottery and rice phytoliths remains from Xianrendong and Diaotonghuan sites, Wannian, Jiangxi
257 Province’. Z Chi . *Pottery and Agriculture*, Y Yasuda (ed.) (India) 2002. Roli Book Pvt. Ltd. p. .

14 CONCLUSION ACKNOWLEDGMENTS

- 258 [Liu et al. ()] 'Evidence for the early beginning (c 9000 cal BP) of rice domestication in China: a response'. L
259 Liu , G Lee , L Jiang , J Zhang . *The Holocene* 2007. 17 (8) p. .
- 260 [Zong et al. ()] 'Fire and flood management of coastal swamp enabled first rice paddy cultivation in east China'.
261 Y Zong , Z Chen , J B Innes , C Chen , Z Wang , H Wand . *Nature* 2007. 449 p. .
- 262 [Roberts et al. ()] 'Fruits of the forest: Human stable isotope ecology and rainforest adaptations in Late
263 Pleistocene and Holocene (~36 to 3 ka) Sri Lanka'. P Roberts , N Perera , O Wedage , S Deraniyagala ,
264 J Perera , S Eregama , M D Petraglia , J A Lee-Thorp . *Journal of Human Evolution* 2017. 106 p. .
- 265 [Cabanes et al. ()] 'Human impact around settlement sites: a phytolith and mineralogical study for assessing
266 site boundaries, phytolith preservation, and implications for spatial reconstructions using plant remains'. D
267 Cabanes , Y Gadot , M Cabanes , I Finkelstein , S Weiner , R Shahack-Gross , D Cabanes . *Journal of*
268 *Archaeological Science* 2012. 39 p. . (Journal of Archaeological)
- 269 [Premathilake ()] 'Human used montane ecosystem in the Horton Plains, central Sri Lanka link to glacial and
270 early Holocene climate and environmental changes'. R Premathilake . *Quaternary Science Reviews* 2012. 50
271 p. .
- 272 [Premathilake ()] 'Human used upper montane ecosystem in the Horton Plains, Central Sri Lanka-a link to late
273 glacial and early Holocene climate and environmental changes'. R Premathilake . *Quaternary Science Review*
274 2012. 50 p. .
- 275 [Premathilake et al. ()] 'Implications of phytolith records from an Early Historic megalithic burial site at
276 Porunthal in Southern India'. R Premathilake , K Anupama , K Rajan , S Prasad , G Orukaimani , Yathees
277 Kumar , VP . *Journal of Archaeological Science Reports* 2017. 11 p. .
- 278 [Reimer et al. ()] 'INTCAL09 and MARINE09 radiocarbon age calibration curves, 0-50,000 years calbp'. P J
279 Reimer , Mgl Baillie , E Bard , A Bayliss , J W Beck , P G Blackwell , C B Ramsey , C E Buck , G S Burr , R
280 L Edwards , M Friedrich , P M Grootes , T P Guilderson , I Hajdas , T J Heaton , A G Hogg , K A Hughen
281 , K F Kaiser , B Kromer , F G McCormac , S W Manning , R W Reimer , D A Richards , J R Southon , S
282 Talamo , Csm Turney , J Van Der Plicht , C E Weyhenmeyer . *Radiocarbon* 2009. 51 (4) p. .
- 283 [Premathilake ()] 'Investigating the precursors and appearance of banana and rice cultivation in Sri Lanka:
284 with the background of long-term climate and environmental changes'. R Premathilake . *Association for*
285 *Environmental Archaeology (AEA) Newsletter* 2015. 128 p. .
- 286 [Biodiversity Theme Workshop (ed.)] *Landscape planning for the future: using fossil records to map potential*
287 *threats, opportunities and likely future developments for biodiversity and ecosystem services*, Biodiversity
288 Theme Workshop (ed.) UK. University of Oxford
- 289 [Premathilake ()] 'Late Pleistocene and early Holocene climate and environmental changes in the Horton Plains,
290 central Sri Lanka'. R Premathilake . *PAGES Focus* 2012. 4.
- 291 [Premathilake ()] 'Late Pleistocene-Early Holocene Anthropogenic Environment from the Horton Plains, Central
292 Sri Lanka'. R Premathilake . *Piyasatahan, Department of Archaeological Survey and Ministry of Cultural*
293 *Affairs*, S Dissanayake, Rev, P Chanaloka, N Kodituwakku (ed.) (Colombo) 2015. p. .
- 294 [Zhao and Piperno ()] 'Late Pleistocene/ Holocene environments in the middle Yangtze River valley, China and
295 rice (*Oryzasativa* L.) domestication: the phytolith evidence'. Z J Zhao , D R Piperno . *Geoarchaeology* 2000.
296 15 p. .
- 297 [Premathilake and Risberg ()] 'Late Quaternary climate history of HortonPlains'. R Premathilake , J Risberg .
298 *Central Sri Lanka. Quaternary Science Review* 2003. 22 p. .
- 299 [Premathilake ()] 'Late Quaternary history of the Horton Plains, central Sri Lanka'. R Premathilake , Risbergj
300 . *Quaternary Science Review* 2003. 22 p. .
- 301 [Premathilake ()] *Late Quaternary Palaeoecological Event Stratigraphy of the Horton Plains, Central Sri Lanka:*
302 *with Contribution to the Recent Pollen Flora*, R Premathilake . 2003. Sweden. Department of Physical
303 Geography and Quaternary Geology 2, Stockholm University (Published Doctoral Thesis)
- 304 [Rajagopalan et al. ()] 'Late Quaternary vegetal and climatic changes from tropical peats in southern India, an
305 extended record up to 40,000 yr B'. G Rajagopalan , R Sukumar , R Ramesh , R K Pant , G Rajgopalan .
306 *P. Current* 1997. 73 p. .
- 307 [Luminescence Dating of Sediments from the Fahien-lenaRockshelter, Southern Sri Lanka] *Luminescence Dat-*
308 *ing of Sediments from the Fahien-lenaRockshelter, Southern Sri Lanka*, East Kilbride, UK. Scottish Uni-
309 versities Environmental Research Centre (Technical Report)
- 310 [Albert ()] 'Mode of occupation of Tabun Cave, Mt Carmel, Israel during the Mousterian period: a study of the
311 sediments and phytoliths'. R M Albert . *Journal of Archaeological* 1999. 26 (10) p. .
- 312 [Gérard et al. ()] 'Modelling the biogeochemical cycle of silicon in soils: application to a temperate forest
313 ecosystem'. F Gérard , K U Mayer , M J Hodson , J Ranger . *Geochimicaet Cosmochimica Acta* 2008.
314 72 p. .

- 315 [Wijeyapala ()] *New Light on the Prehistory of Sri Lanka in the Context of Recent Investigations of Cave Sites*,
316 W H Wijeyapala . 1997. University of Peradeniya (Doctoral Thesis)
- 317 [Saxena et al. ()] ‘On the Holocene record of phytoliths of wild and cultivated rice from Ganga Plain: evidence
318 for rice-based agriculture’. A Saxena , V Prasad , I B Singh , M S Chauhan , R Hassan . *Current Science*
319 2006. 90 (11) p. .
- 320 [Fuller ()] ‘Pathways to Asian Civilizations: Tracing the Origins and Spread of Rice and Rice Cultures’. D Q
321 Fuller . 10.1007/s12284-011-9078-7. *Rice* 2011. 4 p. .
- 322 [Fullerdq ()] ‘Pathways to Asian Civilizations: Tracing the Origins and Spread of Rice and Rice Cultures’.
323 Fullerdq . 10.1007/s12284-011-9078-7. *Rice* 2011. 4 p. .
- 324 [Londo et al. ()] ‘Phylogeography of Asian wild rice, *Oryzarusufipogon*, reveals multiple independent domestication
325 of cultivated rice’. J P Londo , Y C Chiang , K-H Hung , T-Y Chiang , B A Schaal . *Oryza sativa. Proceeding*
326 *of Natural Academy of Science* 2006. PNAS. 103 p. .
- 327 [Piperno ()] *Phytolith analysis: An archaeological and geological perspective*, D R Piperno . 1988. San Diego:
328 Academic Press. p. .
- 329 [Fredlund and Tieszen ()] ‘Phytolith and carbon isotope evidence for late quaternary vegetation and climate
330 change in the southern Black Hills’. G G Fredlund , L L Tieszen . South Dakota.Quaternary 1997. 47 p. .
- 331 [Piperno ()] *Phytolith: a comparative guide for archaeologist and palaeoecologist*, D R Piperno . 2006. Rowman
332 and Littlefield Publishers, Inc. New York.
- 333 [Premathilake et al. ()] ‘Phytoliths as indicators of Quaternary vegetation at the Paleolithic site of Attiram-
334 pakkam’. R Premathilake , K Akhilesh , K Anupama , S Pappu , S Prasad , Y Gunnell , G Orukaimani .
335 *Journal of Archaeological Science Reports* 2017. 14 p. .
- 336 [Alexandre ()] ‘Plant impact on the biogeochemical cycle of silicon and related weathering processes’. A Alexandre
337 . *Geochimicaet Cosmochimica Acta* 1997. 61 p. .
- 338 [Munasinghe and Ms ()] *Pollen morphological studies of selected cultivated and wild species of Poaceae*, Mla
339 Munasinghe , Ms . 2007. Sri Lanka. Postgraduate Institute of Archaeology, University of Kelaniya (Master
340 of Philosophy Thesis)
- 341 [Hunt et al. ()] ‘Pollen palynofacies, phytoliths, assemblage from the west mouth’. C Hunt , L Kealhofer , R
342 Premathilake , G Rushworth , D Gilbertson , S Jone , G Thompson . *Archaeological investigations in the*
343 *Niah Cave*, G Barker, L Farr (ed.) (Sarawak) 2016. p. . McDonald Institute for Archaeological Research,
344 University of Cambridge, Downing Street Cambridge
- 345 [Petraglia ()] ‘Population increase and environmental deterioration correspond with microlithic innovations in
346 South Asia ca. 35,000 years ago. Preceding of Natural Academy of’. M Petraglia . *Science USA* 2009. 106 p. .
- 347 [Perera ()] *Prehistoric Sri Lanka: Late Pleistocene Rockshelters and an Open Air Site. BAR International Series*,
348 H Perera . 2010. Oxford: Archaeopress.
- 349 [Tewari et al. ()] *Preliminary report of the excavation at Lahuradewa, District SantKabir Nagar UP: wider*
350 *archaeological implications*, R Tewari , R K Srivastava , K K Singh , K S Saraswat , I B Singh . 2003.
351 13 p. .
- 352 [Chauhan et al. (20050)] ‘Preliminary result on thepalaeovegetation during the Holocene from Lahuradewalake’.
353 M S Chauhan , A K Pokharia , I B Singh . *District SantKabirNagar UP* 20050. 15 p. .
- 354 [Karkanans ()] ‘Preservation of anthropogenic materials under different geochemical processes: a mineralogical
355 approach’. P Karkanans . *Quaternary International* 2010. 214 p. .
- 356 [Fuller et al. ()] ‘Presumed domestication? Evidence for wild rice cultivation and domestication in the fifth
357 millennium BC of the Lower Yangtze region’. D Q Fuller , E L Harvey , L Qin . *Antiquity* 2007. 81 p. .
- 358 [Singh ()] ‘Quaternary palaeoenvironments of the Ganga Plain and anthropogenic activity’. I Singh . *Man* 2005.
359 30 (1) p. .
- 360 [Loucaides et al. ()] ‘Reactivity of biogenic silica: surface versus bulk charge density’. S Loucaides , T Behrends
361 , P Van Cappellen . *Geochimicaet Cosmochicica Acta* 2010. 74 p. .
- 362 [Premathilake ()] ‘Relationship to Environmental Changes in Central Sri Lanka to Possible Prehistoric Land-use
363 and Climate Change’. R Premathilake . *Paleogeography Paleoclimatology Paleoecology* 2006. 24 p. .
- 364 [Fijiwara ()] ‘Research into the History of Rice Cultivation Using Plant Opal Phytolith’. H Fijiwara . *Current*
365 *Research in Phytoliths: Application in Archaeology and Palaeoecology*, D M Pearsall, D R Piperno (ed.)
366 (Philadelphia) 1993. 10 p. . MASCA, The university Museum of Archaeology and Anthropology, University
367 of Pennsylvania
- 368 [Lu et al. ()] ‘Rice domestication and climate change: phytolith evidence from East China’. H Lu , Z Liu , N Wu
369 , S Berne , Y Saito , B Liu , L Wang . *Boreas* 2002. 31 p. .

14 CONCLUSION ACKNOWLEDGMENTS

- 370 [Kourampasn ()] 'Rockshelter Sedimentation in a Dynamic Tropical Landscape: Late Pleistocene-Early Holocene
371 Archaeological Deposits in KitulgalaBeli-lena'. Kourampasn . *Southwestern Sri Lanka. Geoarchaeology* 2009.
372 24 (6) p. .
- 373 [Borrelli et al. ()] 'Silica content in soil solution and its relation with phytolith weathering and silica biogeo-
374 chemical cycle in Typical Argiudolls of the Pampean Plain, Argentina; a preliminary study'. N Borrelli , M
375 F Alvarez , M L Osterrieth , J E Marcovecchio . *Journal of Soil* 2010. 10 p. .
- 376 [Zoysande ()] *Sinharaja -a rainforest in Sri Lanka*, Raheem R Zoysande . 1987. Colombo: March for Conservation.
- 377 [Oshan (ed.) ()] *Stratigraphical analysis of Fahien Rockshelter in Sri Lanka: comprising stratigraphy*, Wmc Oshan
378 . 21. Kinnaird TC, Sanderson DCW (ed.) 2011. 1988. 2009. 2010. Pune, India. Master of Art Dissertation,
379 Department of Archaeology, Deccan College, Postgraduate Research Institute
- 380 [Frayse ()] 'Surface chemistry and reactivity of plant phytoliths in aqueous solutions'. F Fraysse . *Chemical* 2009.
381 258 p. .
- 382 [Osterrieth et al. ()] 'Taphonomical aspects of silica phytoliths in the loess sediments of the Argentinean Pampas'.
383 M Osterrieth , M Medlla , D Zurro , M F Alvarez . 10.1016/j.quaint.2007.09.002. *Quaternary International*
384 2009. 193 p. .
- 385 [Albert et al. ()] 'Taphonomy of phytoliths and macroplants in different soils from Olduvai Gorge (Tanzania) and
386 the application to Plio-Pleistocenepaleoanthropological samples'. R M Albert , M K Bamford , D Cabanes
387 . *Quaternary* 2006. 148 p. .
- 388 [Fuller et al. ()] *The domestication process and domestication rate in rice: Spikelet bases from the Lower Yangtze*,
389 D Q Fuller , L Qin , Y Zheng , Z Zhao , X Chen , L A Hosoya , G Sun . 2009. 323 p. .
- 390 [Vaughanda and Tomooka ()] 'The evolving story of rice evolution'. Lu Br Vaughanda , N Tomooka . *Plant*
391 *Science* 2008. 174 p. .
- 392 [Perera ()] 'The Importance of Sri Lanka Wet Zone Rockshelters'. H N Perera . *Piyasatahan, Department of*
393 *Archaeological Survey and Ministry of Cultural Affairs*, S Dissanayake, Rev, P Chanaloka, N Kodituwakku
394 (ed.) (Colombo) 2015. p. .
- 395 [Zhijun ()] 'The Middle Yangtze region in China is one place where rice was domesticated: Dhvtolith evidence
396 from the Diaotonghuan Cave'. Z Zhijun . *Antiquity* 1998. 72 p. .
- 397 [Lu ()] 'The occurrence of cereal cultivation in China'. Tld Lu . *Asian Perspectives* 2006. 45 p. .
- 398 [Higham and Lu ()] 'The origins and dispersal of rice cultivation'. Cfw Higham , T Lu . *Antiquity* 1998. 72 p. .
- 399 [Deraniyagala ()] *The Prehistory of Sri Lanka: An Ecological Perspective, second ed. Department of Archaeological*
400 *Survey*, S U Deraniyagala . 1992. Colombo.
- 401 [Farmer et al. ()] 'The role of phytolith formation and dissolution in controlling concentrations of silica in soil
402 solutions and streams'. V C Farmer , E Delbos , J D Miller . *Geoderma* 2005. 127 p. .
- 403 [Vaughan ()] *The Wild Relatives of Rice: A Genetic Resources Handbook. Manila: International Rice Research*
404 *Institute*, D A Vaughan . 1994. Los Banos, Laguna (Philippines).
- 405 [Farrera et al. ()] 'Tropical climates at the Last Glacial Maximum: a new synthesis of terrestrial palaeoclimate
406 data, vegetation, lake levels and geochemistry'. I Farrera , S P Harrison , Prentice Ic , G Ramstein , J Guiot
407 , P J Bartlein , R Bonnefille , M Bush , W Cramer , U Von Grafenstein , K Holmgren , H Hooghiemstra , G
408 Hope , D Jolly , S-E Lauritzen , Y Ono , S Pinot , M Stute , G Yu . *Climate Dynamics* 1999. 15 p. .
- 409 [Mercader J. (ed.) ()] *Under the Canopy: The Archaeology of Tropical Rain forests*, Mercader J. (ed.) 2002.
410 London: Rutgers University Press.
- 411 [Kumaran et al. ()] 'Vegetation response to South Asian monsoon variations in Konkan, western India during
412 the late Quaternary: evidence from fluvio-lacustrine archives'. Kpn Kumaran , R B Limaye , S A Punekar ,
413 S N Rajaguru , Joshiv , S N Karlekar . *Quaternary International* 2013. 286 p. .
- 414 [Fuller and Qin ()] 'Water management and labour in the origins and dispersal of Asian rice'. D Q Fuller , L (
415 Qin . *World Archaeology* 2009. 41 (1) p. .
- 416 [Fuller Dq Qin ()] 'Water management and labour in the origins and dispersal of Asian rice'. L Fuller Dq Qin .
417 *World Archaeology* 2009. 41 (1) p. .