

1 Impact of Urban Expansion on Surrounding Peasant Land in the
 2 Case of Boloso Sore Woreda, Areka Town, SNNPR, Ethiopia. Strictly as
 3 per the compliance and regulations of

4 Mefekir Woldegebriel Tessema¹

5 ¹ WOLAITA SODO UNIVERSITY

6 *Received: 14 December 2016 Accepted: 31 December 2016 Published: 15 January 2017*

8 **Abstract**

9 The main objective of the study was to assess the impact of urban expansion on surrounding
 10 peasant land in Areka town. The data were obtained from 68 randomly selected respondents
 11 by using questionnaires and interview from municipality office workers other illiterate
 12 indigenous peoples of the town as well as from secondary sources were also included. To
 13 analysis the collected data were edited, tabulated, percentage and finally descriptive method
 14 was employed. The result revealed that there are many factors causing urban expansion to
 15 surrounding peasant land: those are establishment of market, infrastructure, rural to urban
 16 migration and positive consequences of urban expansion. Such as advance in communication,
 17 eclectic power, health and education facilities and also negative consequences of urban
 18 expansion such as loss of agricultural land, expansions of crimes, urban pollution and housing
 19 problems and lastly the pattern of urban expansion are the major ones. To regulate the
 20 impacts of urban expansion that found in the town the participation of government and
 21 dwellers of the town are very necessary .

22 *Index terms*— agriculture land, urban expansion, peasant, urbanization

23 **1 Introduction**

24 a) Background of the Study In historical terms, urbanization on any scale is essentially a recent. A feature of the
 25 last 100 and years. Urbanization has been estimated that before the beginning of the 19th C only 3% of the
 26 world's population lived in town of over 5000 people. By the present this has risen to near 4%. Expressed in a
 27 different way the world, population increased ¾ between 1800 and 1960. The world urban population increased
 28 thirty-four. Between 1950 and 1970 the world population rose from 28% to 38% (Devis, 1972).

29 The UN defines urbanization as the course of shift in population from a rural to urban civilization. Numerically
 30 expressed urbanization denotes the increases in the share of the population that resides in urban areas
 31 predominantly because of net rural to urban migration (Devis, 1972).

32 In most conscious features of today's accelerated world population growth its even greater rapidity of
 33 urbanization. In many periods of history population cities have grown, but the change and dimensions of recent
 34 years have never been balanced. It follows that urbanization is the dominant process in the special organization
 35 of the world populations (UNFPA, 2007).

36 The association of industrialization with urbanization in the West conceals that the fact urban growth is the
 37 most consumption in developing countries indeed the areas of massive contemporary in the gradual South ward
 38 movement of the means latitude of the largest cities (UN, 1987).

39 Many countries in Sub-Saharan Africa have recently experienced urban expansion. According to 2004 UN
 40 report on world urbanization prospects in 1950, there were only 20 million people or 10-15% of the total
 41 population, living in urban areas in the Sub-Saharan Africa, Urban population also expected to be approximately

6 REVIEW OF RELATED LITERATURES A) CONCEPT OF URBANIZATION

43 150 million in 1990. Its growth rate was 5% in the world per annum according to Woailta zone development
44 office. Areka town is one of the Woreda city and its consists towns. the towns, in this towns are Gara Godo,
45 Dola, Hembecho, Woybo and Achura are the preeminent in their urbanization process and critical to land use
46 change that is loss of agricultural and socioeconomic problems of the displace people ??Toddaro, 2002).

2 b) Statement of the Problem

48 Housing shortage and poor housing conditions, the result of massive urbanization are life threatening, sub
49 standard housing, unsafe water and poor sanitation in densely populated cities are responsible for 10 million
50 deaths worldwide every years and area major factor in preventable environmental hazards, which are responsible
51 for 25% of all premature deaths worldwide (UN - Habitat, 2003).

52 Urban expansion have significant impact on biodiversity hot spots around in the worlds moreover, urban
53 expansion will encroach on or destroy habitat for 139 amphibians 41 mammalians and 25 birds species that
54 are easier on the critically endangered lists of the international union for conservation of natural environment
55 (WWW.Environment, YaleEdv). The phenolmena of urban heat is land has become a growing concern. Incidence
56 heat island is formed when industrial Impact of Urban Expansion on Surrounding Peasant Land the Case of Boloso
57 Sore Woreda, Areka Town, SNNPR, Ethiopia and urban areas are developing resulting in greater production
58 and retention of rural area (Partk -H -S, 1987). A large proportion of solar energy that affects, rural area is
59 consumed evaporating water from vegetation and soil. In cities, where there is less vegetation and exposed soil,
60 the majority of the sun's energy is absorbed by urban structures and aspects. Hence, during warm day light
61 hours, less evaporative cooling in cities results in higher surface temperature than in rural areas (Grant -Ursula,
62 2008).

63 Urban expansion is the main problems in most developing countries. Our country Ethiopia also one of the
64 country's facing the problem of urban expansion. It has been expansion or experiencing rapidly agricultural land
65 use transformation in to urban land use due to expensive urban expansion. This town increases in size from time
66 to time by four sides. That means North, South, West and East side. The urban expansion affects peasant land
67 due to this expansion of town many farmers displaced from their land and loss of their farming land.

3 c) Objective of the Study i. General Objectives

69 The general objectives of this study are to assess the major impacts of urban expansion on rural areas of
70 surrounding peasants land in Areka town. The first and foremost reason of urban expansion is increase in urban
71 population. Rapid growth of town population growth factors are natural increase in population and migration to
72 urban area searching job opportunities better life and others. Both internal and external migrations contribute
73 to urban expansion, in addition to: - This study was conducted in Boloso Sore Woreda, Areka town particularly
74 in Areka town, the town has been expanding horizontally to all direction and the Kebeles that are found on the
75 surrounding of the towns are subject to this study. This study also focuses on the impacts causes, consequences
76 and patterns of urban expansion in the study area.

4 f) Limitation of the Study

78 The main limitation of the study was the reactance of the interviewers to give reliable information and Woreda
79 has poor documentation system farther more some officials and authorities are not willing to give the required
80 information.

5 II.

6 Review of Related Literatures a) Concept of Urbanization

83 The concept of urbanization is defined in a processes by which rural and areas are transformed in to town areas
84 and which included the growth of city population and natural increases of population (Wough, 1990).

85 Urbanization is defined as an increasing share of a nations of population living in urban areas and those
86 a declining share living in rural areas. Most urbanization is the result of net rural to urban migration. A
87 nations city population can grow from natural increase (Births Minces) deaths, net rural to urban migration and
88 reclassification /as what was previously a rural settlement becomes classified as urban or an urban settlement
89 boundaries are explained or expansion bringing in to its population or people who will peevishly classified as
90 rural. Perhaps the most significant features of world urbanization are recently of its dominance. It has been
91 estimated that before the start of the 19 th C only 3% of the world's population lived in towns of over 500.

92 At the present time the figure is probably about 40%. Urban center have existed and have been evolving
93 for many centuries across the world. However, the accelerated growth of urbanization is relatively a recent
94 phenomena (Hall, 1973).

95 The enormous size of urban populations and more significantly, the city rapidity with which the urban areas
96 have been and are grown in many developing countries. Urban population sub-Saharan Africa (SSSA) was
97 projected to be approximately 150 million in 1909. They are growing rapidly. It will be expected to be about
98 260 million by 2000 (Potts, 2009).

99 The history of urbanization in Ethiopia goes to back the Axumite civilization. during this time there were
100 a number of town, commerce had flourished countries. Later, this urban culture began to shift Lalibela and
101 Gondar, However, the development was also facing the some rate of urbanization of expand (UN, 1969).

102 **7 b) Pattern and Trend of Urban Growth in Ethiopia**

103 Ethiopia, being the third popular country in Africa is one of the least urbanized. Its urban population constitutes
104 15% like most developing countries. Ethiopia, urban population is concentrated in one primate city of Addis
105 Ababa representing 28.4% of the total urban population ??Fessusu and Detachew, 2002).

106 At national level, the level and trends of urbanization indicates significant regional variation. For example
107 Addis Ababa (28.4%) Amhara 17.32%) Oromia 17% SNNPR 15.2%, Tigray 15.2% and Gambela 9.62%
108 respectively. Addis Ababa at 100% of urbanization is most urbanized and urban population in a country and
109 Gambela has the lowest urban population the average mean of 9.6% (CSA, 2008).

110 Ethiopia is currently of the least urbanized countries in the world even Africa. Fewer than one person in five
111 is city or town dweller. However, the rate of at which the countries urban areas the growing are among the
112 highest in Africa. Many social, economic and environment problems have accomplined urbanization in Ethiopia
113 and have been ignored for too long (Girma, 2004).

114 The people residing in urban areas also increasing from 4-3 million in 1987 to 7-4 million in 1994, which is
115 estimated to have already reached 10-6 million in the year 2003 and projected to reach 20 million by the year
116 2020 (NUPI, 2003).

117 **8 c) Causes of Urban Expansion**

118 In line with broad historical trends elsewhere, rural to urban migration in developing countries constitutes the
119 single most important cause of the rapid growth of the urban population migration from rural as population and
120 in exceptional causes, as much as 75% in sub-Saharan Africa ??Todaro, 2000).

121 Although rural to urban migration due to poverty in rural areas results from low agricultural productivity and
122 due to rural areas are relatively, under served in terms of physical financial and economic infrastructure ??Todaro,
123 2000). Urbanization occurs as individually, commercial, social and governmental efforts reduce time and expense
124 in commuting and transportation and improve opportunities for jobs, education, housing and transportation.
125 Cities are known to be place where money, services, wealth and opportunities are centralized. Many rural
126 inhabitants come to the city for the reasons for seeking for turns of social mobility, Businesses, which provides
127 jobs and exchange of capital, are more concentrated in urban areas ??Todaro, 2000).

128 Although the process of urbanization happens in both developed countries and least developed countries the
129 fastest growing cities in the world are in least developed countries. The reasons for the growth of urban areas
130 include lack of and poor employment opportunities in the country side over population and poor crop yields are
131 all push factors -why people leave the country side. Better paid jobs in the cities an expected higher standard of
132 living and more reliable food are an others factors why people are attracted to the city.

133 A nations urban population grow from natural increase birth minus deaths, net rural to urban migration and
134 reclassification (as what was previously a rural settlement becomes classified as urban areas a urban settlements
135 boundaries are expanded (BBC, 2014).

136 **9 d) Negative Impact of urbanization i. The Environmental 137 Impact of Urban Expansion**

138 The phenomena of urban heat islands have become a growing concern. Incidence of this phenomena as well as
139 concern about it has increased over the years. Urban heat is land are formed when industrial and urban areas are
140 developed resulting in greater production and retention of heat. A large proportion of solar energy that affects
141 rural areas is consumed evaporating water from vegetation and exposed cites, where there is less vegetation and
142 exposed soil (Park, 1987).

143 The paved surface in urban area creates runoff during rain storms. This run off pick up oil chemicals and
144 gravel from the pavement and grass. These chemicals would usually be filtered out of water affected, fertilizers
145 from yards, runoff in to streams causing algae blooms-the algae blooms decrease the oxygen in the water killing
146 the fish and the water supply for the towns (C. ??lore, 2007).

147 Urban expansion also results in less ground water, more paved surface means that there is less in filtration for
148 ground water. Areas that depends on ground water as surface of public water supply are facing a water crises as
149 the quality becomes depleted (Hardoy et al, 2001).

150 Urban expansion is not accompanied by environmental protection system. Urban waste is relay on open
151 canals, open drains in the road side and holes in the ground as regular means of waste disposal particularly in
152 the expansion area. This exposes the dwellers to sanitation related diseases and air pollution. In addition to
153 farm land, environmental resources such as clean air and water peace and quietly access to the country side and
154 recreational facilities are environmental values that rural farming community loss due to urban expansion ??Balk
155 et al, 2001).

10 ii. Economic Impacts of Urbanization

As activities develop, effects can include a dramatic increase and change in costs often pricing the local working class out of the market including such functionality as employs of the local municipalities (Grant Ursula, 2008).

Urban problems along with infrastructure developments are also fueling sub urbanization trends in developing nations through the trend for core cities inside nations tend to continue to become ever denser (Glaser Edulard, 1998).

In developing countries peoples are migrating to urban centers. From the center the poor move to periphery for urban renewal or squatting. This areas need provision of infrastructure of road, power line, water pipes and drainage line. This requires development cost that draws on the financial capacity of the municipal government. In many cases of municipality cannot afford to provide and people remain deficient to basic means of life. Because of this is most of the residents are exposed relatively to high cost of living. In some case urbanization does not involve economic growth but economic stagnation or low growth, mainly contributing to slum growth in sub-Saharan Africa and parts of Asia this type of urbanization involves a high rate of unemployment in sufficient financial resources and in consistent urban planning policy (Cheru F. 2005).

11 iii. Social Consequence of Urbanization

The increase in the world urban population will be most dramatic in the poorest and least developed or urbanized continents. Asia and Africa one billion people, seventh of the world population or one third of urban population now live in shanty towns, which as seen as breeding grounds, for social problems such as crime, drug, addition alcoholism, poverty and unemployment. There is increasing competition for facilities in urban areas which results in several negative affects many people mainly farmers who have move to cities in search of a better life and occupational opportunities and dup a casual laborers this lead to menacing problems of urban growth slum (Rashid Farid, 2012).

12 III.

13 Research Methodology a) Research Design

The researcher choice to qualitative type of research because the researcher will go to assess initiating factors of peasant land on local farmers at the study area. Quantitative and qualitative approach are applicable to phenomena that can be expressed in terms of quantity and to discover the motive of human behavior. b) Sampling Techniques and Sample Size Due to time and finance time, the researcher took only one Kebele from the four Kebele of the town: there are (01/ Kalehiwit number 1 Sefari, 02/ Meseret: Kiritose Church Sefar, 03/Maged Sefar, 04 / Mikael Chruch Sefari). Which is Kebele 02 due to high occurrence of the problem. So the researcher used simple random sampling method to select and take the respondents from the total households in the Kebele. The Kebele 02 have a total household of 4820 and from 2300 were male headed households and 2020 were female headed households. From the total households 10% were selected as sample respondents, which is 63 households.

14 c) Types and Sources of Data

In order to achieve the stated objectives both primary and secondary data was collected from primary and secondary data sources. Primary data was obtained from key information interview from municipality office workers and from other illiterate indigenous peoples of the town and questionnaires from selected respondents was employed. Secondary data was collected from various written materials, published and unpublished books, reports and from internet.

15 d) Methods of Data Collection

In this study, the researcher was made interview with the municipality workers and for other indigenous residents of the town to get reliable data and the next was questionnaires of similar type which include both open and close ended questions to the respondents was employed.

16 e) Method of Data Procedure

There was a different collection tools that were used in this study. The primary data was collected by questionnaires, which was distributed to sample respondents. In addition to the questionnaire data that was obtained by through interview with municipality workers and some indigenous people.

17 f) Methods of Data Analysis

The qualitative data such as data from interview and other secondary sources was analyzed in the form to essay. The data that was collected from sample respondents through questionnaire was statistically processed and some descriptive parameters like percentage, frequency, pie chart and tables were used to present data.

18 g) Ethical Consideration in the Field Work

During gathering information from different concerned bodies the researcher were show positive approach at any time for the respondents. The respondents asked question given by (answer) different things according to the need of the researcher. The respondents are giving clear information to the researcher asked question. The respondents are does not showed unethical behaviors.

19 IV.

Description of the Study Area a) Location and Size Boloso Sore Woreda is located in Wolaita Zone, SNNPR state of Ethiopia and it include 12 Woreda's and 3 city administrations. Astronomically, the Woreda is located between 7000" 00' and 7011"00' N Latitude and 370 00"00' and 37050"00' E longitude. The Woreda capital Boloso Sore is found 299 km away from the country capital Addis Abeba , 158km away from Regional capital, Hawassa and 29 km from Sodo Which is capital city of Wolaita zone. The Woreda with a total land area of 28,800 hectare is further divided in to 29 rural kebeles. It is bordered with Kambata Tembaro Zone in the North, Damot Sore Woreda in the South, Boloso Bombe Woreda in the West and Damote Gale worda east and Badawacho Woreda of Hadiya Zone in the east.

The study area Arek is a major town of Boloso Sore Woreda and it was established 1955 E.C changed from Boloso Sore to area at the time of empire Haile Sellasie. This town also relatively located on the South of Yukara Kebele, on the West Tadisaa Kebele on the East Dubo Kebele, on the North Wurimuma Kebele.

The two rivers are Kullia and Ululo which flows to North direction of the town on the West and East respectively bounds the town from both sides. These towns for from 299 km to Addis Ababa and 29 km from Sodo Which is capital city of Wolaita zone (Municipality Office, 2006).

20 b) Climate

Agro climatically, the Woreda is classified as Woina Dega which covers 83% of total area and the remaining 17% is Dega (BSWARD offices, 2014), where favorable climate condition for settlement. The average temperature varies between 10 to 20 . Rain is occurs during June to August and September is a transitional period between rainy and dry season and the annual rain fall of the Woreda is 1201mm to 1600mm (Wolaita Zone Metrological offices, 2014). Based on 2000 census conducted by the CSA, this Woreda has a total population 60,000 of whom 29000 are male and 31,000 are female. From the total population only 9.18% are urban dwellers and the rest were rural dwellers. Particularly the study area have a total population of 60,000 from whom 29,000 were males and 31,000 were females according to municipality office of the town in 2007. This town has also a total households of the town, the selected Kebele to the study which is 02/Meserat Kiristos Sefari, have a total households from 2900 are female and 2000 are male households.

The majority of inhabitants of the town were protestant, with 60.85% of population, reporting that beliefs 42.8% follow Orthodox and 0.95% practiced traditional beliefs. The largest ethnic groups reported in Woreda Wolaita (97.78%) and all other ethnics groups made up (2.26%) of the total population of Woreda (Municipal Office, 2006) Wolaita was the dominant first languages spoken by 99% of the inhabitants. The remaining 0.1% spoken other languages (Office, 2007).

21 ii. Socio-Economic Condition

The Boloso Sore Woreda is known by its practicing predominantly agriculture (arable farming and animal husbandry). The major agricultural production includes Maize, Teff, Coffee, Enset, Banana and others in their ecological zone.

The economics of the people in this Woreda also mainly on the agriculture and some peoples in the densely populated areas practices commercial activity (Agricultural and development ??ffice, 2006). Peoples in the study area also engaged in different economic activities, majority of the practices commercial activities. Some people also produce food and drinks and some peoples are shop keepers, carpenter and traders. Others are engaged on government sectors for their livelihood (Municipality Office, 2006).

22 iii. Infrastructure

The study area has different infrastructures, but the supply is not balanced with the demands of the town. The sources of water supply to the town are from the steam, ground and little rivers and pipe/ Tankers of water. The sources of electric power to the town from Wolaita zone Sodo and the town gets this power periodically now. The town also a total number 50 transformers. The distribution of health in the town also well and it has 1 health station, 10 clinics, 6 private pharmacy and 5 drug stores. The education services of the town were also good and its has 7 kg school, 6 elementary in government schools, 3 private elementary and 2 high school of government and 1 private high school and 2 preparatory school.

23 V. Data Analysis and Interpretation Results

This section of paper provides the backgrounds of respondents, cause urban expansion, negative and positive consequences well as pattern of urbanization in the study areas are explained. The researcher selected 68

264 respondents randomly and interview for old indigenous illiterate peoples and some municipality workers to get
265 oral information is conducted to this study.

266 **24 a) Background of the Respondents i. Age and Sex Composition of Respondents**

267
268 The age of respondents below 20 years, 20-30 years old and 30-40 years, 40-50 years, 50-66 years and 66 years
269 above years old with this regard to sex from 68 respondents 42 respondents are males and 26 respondents are
270 female households according to respondents. According to the table 5.1 highest share of respondents are males
271 which is 42 and the remain g 26 are females households. The maximum number of respondents from both sex
272 are 20-30 years old which is totally 28 respondents and the minimum is >60 years in both sex, which are only 3.

273 **25 ii. Educational Level of the Respondents**

274 According to the information that derived from questionnaire the education level of the respondents was shown
275 in the table below. According to the table the majority of the respondents were married which is 39(57.35%)
276 were married, 24(35.29%) were single 3(4.41%) were divorce and the remaining 2 (2.94%) were widowed.

277 **26 iv. The Occupation of the Respondents**

278 The respondents are engaged in the different activities. From this the major ones are agriculture, on commerce
279 or trade as government employer and in private sector. So the occupation level of the respondents are presented
280 in the table below. The table shows that majority of the respondents engaged in agriculture which 27(39.70%)
281 and the next is trade which is 24(35.29%). some 10's are works in government offices as permanent workers and
282 3 households are engaged in private sectors.

283 **27 b) Causes of Urbanization**

284 As researcher got oral information from the old or indigenous peoples of the town and municipality office
285 workers interview and questionnaires distributed to the selected respondents. The cause that result in urban
286 expansions are the rural to urban migration due to establishment of market, road transportation, access to
287 health and education in the urban areas; natural increases and reclassification of rural settlement in to urban
288 settlement. Table 5.5 presents the causes that exacerbate the Areka town to expand to its surrounding peasant
289 land was infrastructure accessibility, natural increases, rural-urban migration and reclassification of the former
290 rural settlement in to new urban settlement is the major ones. The most major cause of expansion of Areka town
291 is rural-urban migration out of the total respondents 34(50%) are said the migration is the main dominant than
292 others. The interviewers also suggests the rural-urban migration as a major causes which results from lack of job
293 opportunity, low infrastructure facility and poverty in the rural areas than urban areas and other factors. Due
294 to these factors the people move or migrate from the rural to town for the seek of good job opportunity, market
295 access and good living standard ??Municipal Office, 2007).

296 Infrastructure accessibility is the second major factors to expansion of Areka town according to the sample
297 respondents from questionnaire. From the total of 68 respondents 19(27.94%) are responds it as a major cause.
298 These infrastructures are goods transportation network, market accessibility, private and governments sectors
299 and health and educations facilities. The interview also suggests the same as the information gathered from
300 questionnaires in above paragraph. They suggest infrastructure accessibility in urban area is better than rural area
301 attracts peoples from any periphery and due to right access of infrastructure like education, health centers market
302 and road transportations. Reclassification of the former rural area in to new urban settlement is also another
303 cause of the expansion of Areka town. From the total respondents 9(13.23%) respondents said reclassification of
304 surrounding rural areas in to urban settlement is the main cause. The remaining 6(8.82%) respondents response
305 not rural increase of the population as a cause of expansion of Areka town. The imbalance between fertility
306 (birth) and mortality (death) or generally natural increase results in over population and the population number
307 of the town will be increase and the people of the town needs rural to buy the cheap land and these results in
308 the high urbanization process.

309 **28 c) Negative Impacts of Urbanization**

310 The expansion of the Areka town has several negative consequences on the surrounding physical and human
311 environments. According to the respondents. These negative impacts are loss of agricultural land, displacement
312 of people from their area, environmental pollution and expansion of crime and social disorders. These negative
313 impacts are presented in the table below. According to the table loss of agricultural land is the major impacts
314 of urban expansion in study area. From the total respondents 27(39.70%) responds it as a major negative
315 consequence. The next was environmental pollution which is 18(26.47%) of the respondents.

316 The third was displacement of peoples which is 14(20.58%) of following expansion of crime and housing problem
317 which are 7(10.29%) and 2(2.94%) respectively from the total respondents. the loss of agricultural land due to
318 urban expansion also results and land use change of the surrounding people. The peoples particularly farmers

319 in the surrounding Kebeles are highly affect by this problem. Their land was over cultivated due to intensive
320 cultivation and their grazing land and forest areas also affected by this expansion.

321 The other most impact was displacement of people from their original and due to urban expansion. The
322 rural peoples that found on the surrounding of the town forcedly displace from their original land and they gave
323 their land and their resource freely or in a low compensation to others. This result the surrounding peoples on
324 poverty according to the questionnaire and interviewer. Some interviewers suggest that the other major factor
325 that results from urban expansion is environmental pollution and housing problem. they states two rivers (such
326 as Kulia and Puto) are mostly affected or polluted by these urban expansion. The people carry their waste to
327 these rivers and consequently these rivers were out of home consumption.

328 The housing problem is one of a major consequence which results from high rural to urban migration and high
329 land value and it results in disease like malaria and other respiratory diseases according to the interviewers.

330 **29 d) Positive Consequences of Urban Expansion**

331 The expansion of urban area has many advantages for the society of Areka town as well as for surrounding peoples.
332 These advantages are creation of job opportunity, expansion of infrastructures like education, transportation,
333 health, electricity and communication services are advancement. Crimes would intensive in every corner of the
334 town, kinds of ghosts, slams, robber and theft would which may complicate with business activity in the formal
335 sector and even attract the market and weaken the others. Illegal construction of houses to accommodate the
336 incoming people and would accelerated pressure on public utilities like health, schools water supplies . etc that
337 would alarmingly increase and so forth. Source: Field Survey, 2016

338 According to the table 5.7 the largest share of the respondents which is 28(41.17%) responds to creation of
339 job opportunities. The next was electric power and health services which 18(26.47%), the third one is advance
340 communication services which is 12(17.64%) and the last was expansion of roads and education services which is
341 10(14.70%) from total respondents.

342 In the same manner the interviewers suggests or responds that the positive consequence of urban expansion
343 is creation of job opportunity for unemployed youth and other age group populations of the town as well as for
344 peoples in surrounding area. The creation or expansion for all type of infrastructure in the town employs some
345 unemployed people as a permanent or daily paid workers and this supports their living conditions.

346 **30 i. Electric Power ii. Health Facility**

347 Health center is the most fundamental objectives for social service. the halth facilities which are occurred in the
348 town are proportionally enough with the number of population in the town. In the town there are governmental
349 and non-governmental health facilities. These are presented in the table below. At it can be seen from the table
350 5.8 above there is one health center, 11 clinics, 3 drugs houses for cattle, for human and cattle 10 pharmacy
351 and 1 hospital. This shows that top the population of the urban of the town and other surroundings, there are
352 sufficient health services.

353 iii. Education Services of the Town According to the municipality office of the town, these town experience
354 good in education services for the people. It also shows a change from year to year. In 1980's only one high
355 school and one elementary school in the town and after 10 years around in 1990 these town have 3 high school
356 and 5 elementary school, 2 preparatory school, 4kg schools presented in the table.

357 Global Journal of Human Social Science -Year 2017 62 Areka town has electric power supply for 24 hours from
358 Wolaita Sodo hydro electric power station.

359 The current electric power of the town distributed 50 transformers. This amount of power services shared
360 among different types of customers found the town, the town transformers are sufficient to available full service to
361 the dwellers of the town. Furthermore, this power is not only shared for the town dwellers, but some surrounding
362 rural peoples also use it from the town (Source: Field Survey, 2016). Bar graph 5.1: Educational facility
363 Source: Municipal Office, 2016 According to above bar graph the town has currently 2 pre-educational schools,
364 6 elementary school, 3 secondary school 5 kg school and 2 preparatory school and 1 college. This expansion of
365 education services in the town provides good a education chance and endeavor for the peoples of the town and
366 for the surrounding peoples.

367 **31 iv. Pattern of Urban Expansion**

368 As researcher got information from the urban dwellers where are participated in the interviews said that the
369 town physical expansion is covered by the years from 1970 E.C to day's end this expansion is legally with a
370 proper plan to invention the best and most appropriate future development of towns, to establish statement of
371 land use and development principles, to establish local standard on the implementation of ordinance and other
372 planning measures and to achieve smart growth, resources and environmental sustainability. However, some few
373 interviewers stated that there are illegally constructed houses at the margins of the rural rebels, this houses
374 are without plan constructed (i.e., built at night illegally). According to them, the expansion today is highly
375 illegal due to lowland cost in the surrounding and new settlers or migrants from rural area buy a plot of land
376 from surrounding peasants the town by low lost and they settle on that place. This type of expansion is mostly
377 occurred in almost all direction of the town except northern peat because of good topography to the settlement.

37 B) CONCLUSION

378 The expansion of this town is highly to the south and East ward due to flat topographic condition and good read
379 links with other areas.

380 **32 e) Challenges of Social Service provision Associated with** 381 **Urban Expansion**

382 The following discussion was made on the basis of information obtained from the municipal head of Areka
383 town and land administration worker via interview. Problems of social service provision associated with urban
384 expansion: According to the interviewee, there are many problems associated with the expansion of urbanization.
385 Due to geographical configuration and number of population of the town it was difficult to conduct different
386 services lie education, health, water and other facilities.

387 According to the interviewee, there are many advantages of urban expansion in Areka town, these are
388 transformation of technology, establishment of institution, civilization and it also creates job opportunity for
389 people.

390 The following discussion was made on the basis of information obtained from the municipal head of Areka
391 town and land administration worker via interview.

392 **33 i. Problems of social service provision associated with urban** 393 **expansion**

394 According to the interviewee, there are many problems associated with the expansion of urbanization. Due to
395 geographical configuration and number of population of the town it was difficult to conduct different services lie
396 education, health, water and other facilities.

397 ii. The opportunities of urban expansion in social service provision

398 According to the interviewee, there are many advantages of urban expansion in Areka town, these are
399 transformation of technology, establishment of institution, civilization and it also creates job opportunity for
400 people.

401 **34 iii. Major factors that contribute for urban expansion in** 402 **Areka town**

403 As the interviewee replied, there are many factors that facilitate the horizontal urban growth in Areka town.
404 These are rapid population growth, and rural to urban migration, Informal settlement in Areke town:

405 As the interviewee replied, there are informal constructions of houses in Areka town due to the expansion of
406 the town; the farmers construct houses on The opportunities of urban expansion in social service provision: their
407 farm lands to protect their land from government influence.

408 **35 VI.**

409 **36 Summary, Conclusion and Recommendation a) Summary**

410 The relevant data for this study was obtained from distribution of questionnaire collected from peasant affected
411 by urban expansion. These respondents are selected from Kebele 02 due to high occurrence of the problem and
412 the researcher was taken 10% of them as a sample respondent which are 68 householders.

413 In this study the researcher tried to explain cause, consequences and patterns of urban expansion. The causes
414 of urban expansion is rural-urban migration, natural growth, reclassification of the former rural land and etc.
415 The consequences of urban expansion is both positive and negative. Positive impacts are access to infrastructure
416 like road, communication and other services like education health facilities and etc. The negative consequences
417 are environmental pollution, displacement of peoples, loss of agricultural land, expansion of crime and housing
418 problem.

419 **37 b) Conclusion**

420 The urbanization process inflected the living of several farmers. In addition there are few exceptions of early
421 adapters, the majority of the people are disposed of asset. The community becomes at large market dependent
422 both for impulse and for consumption. Expense are an alarming increasing event, if they adopt urban life were
423 as income is being dimensioned they have now purchase water and energy sources as it they adopt supply then in
424 past. In addition to the construction of the new houses and project the demands for large land area per person
425 is contributing for urban expansion. Wasted land without any defined function existed there in the town. Thus
426 the problems related to expansion are partly resulted from the miss management of land and other resources in
427 the inner cities.

428 The physical mobility of market a long with expansion of its size created and continued to create mass eviction
429 and displacement, like of capital conspired with dimensioning asset demand the problems of displaced. These
430 economically weakness illiterates, women, children and elderly area suffering the mildest of crises. The unplanned
431 urbanization process are in fact affecting the environment itself can degradation, pollution, deforestation, and

432 destruction of wild animals are clearly exhibited. If the current worth situation is aggravated, further more the
433 overall environmental crises will be inevitable.

434 Urban expansion has an impact on land resources such as loss of agricultural land, causes forest destruction,
435 loss of habitat and decrease in water quantity and quality in the town. Therefore, based on the above evidence
436 collected from respondents the town mayor it is possible to conclude that rapid horizontal urban growth has an
437 adverse impact on the socioeconomic activities in the study area.

438 **38 c) Recommendation**

439 ? Providing training service about the effect of urban expansion to the people is important issues. ? The biggest
440 steps that come to be taken to off get current and future effects of urbanization on the people involve better city
441 management and forward looking urban planning proper land use policy must be designed in way it facilitates
442 the expansion of the town in proper plan trained. Better and more efficient urban planning must take place
443 to control urban growth by considering both physical and human environment. To achieve these administers
444 municipality officers and professional labor must have work together. ? The government must have responsible
445 body to compensate for the people who displaced from their original land and who lost their agricultural land due
446 to urban expansion. ? The awareness creation among public was very important to conserve the forest and other
447 biodiversity of the surrounding area. ? Expansion of slum and squatter settlements are another socio-economic
448 challenge due to urban expansion. Because of uncontrolled urban growth, the cost of the land is increasing
449 accordingly. Therefore, poor people forced to construct house with a minimum ? Land is a basic resource, which
450 has reached a stage of scarcity in certain areas today because of rapid urbanization. In study area however,
451 rural urban migration and land speculation has been inefficiently exploiting the land for their speculation again.
452 Thus, in order to control the problem, the city administration should enact properties and regulations regarding
453 conversation of agricultural land to urban use.

454 **39 VII.**

455 This study is carried out by the support of many people I am grateful for the people who have given me the
456 help during this work and I want to express my gratitude to all of them. At first I want to thank my students of
457 third year Geography and Environmental studies data collection process . I would like to give thanks to my staff
458 for their communication about the issues of such research study. I also want to thank the voluntary who collect
459 and post the geographic data online voluntarily distributed data are useful and were necessary for this study.
460 In particular. I should give my thanks to Boloso Sore Woreda ,Areka town office workers, Kebele workers, and
461 indigenous peoples. Their Global Journals Inc. (US) Guidelines Handbook 2017 www.GlobalJournals.org^{1 2}
462 ³

¹Year 2017

²© 2017 Global Journals Inc. (US)Volume XVII Issue II Version I

³Impact of Urban Expansion on Surrounding Peasant Land the Case of Boloso Sore Woreda, Areka Town, Snnpr, Ethiopia © 2017 Global Journals Inc. (US)

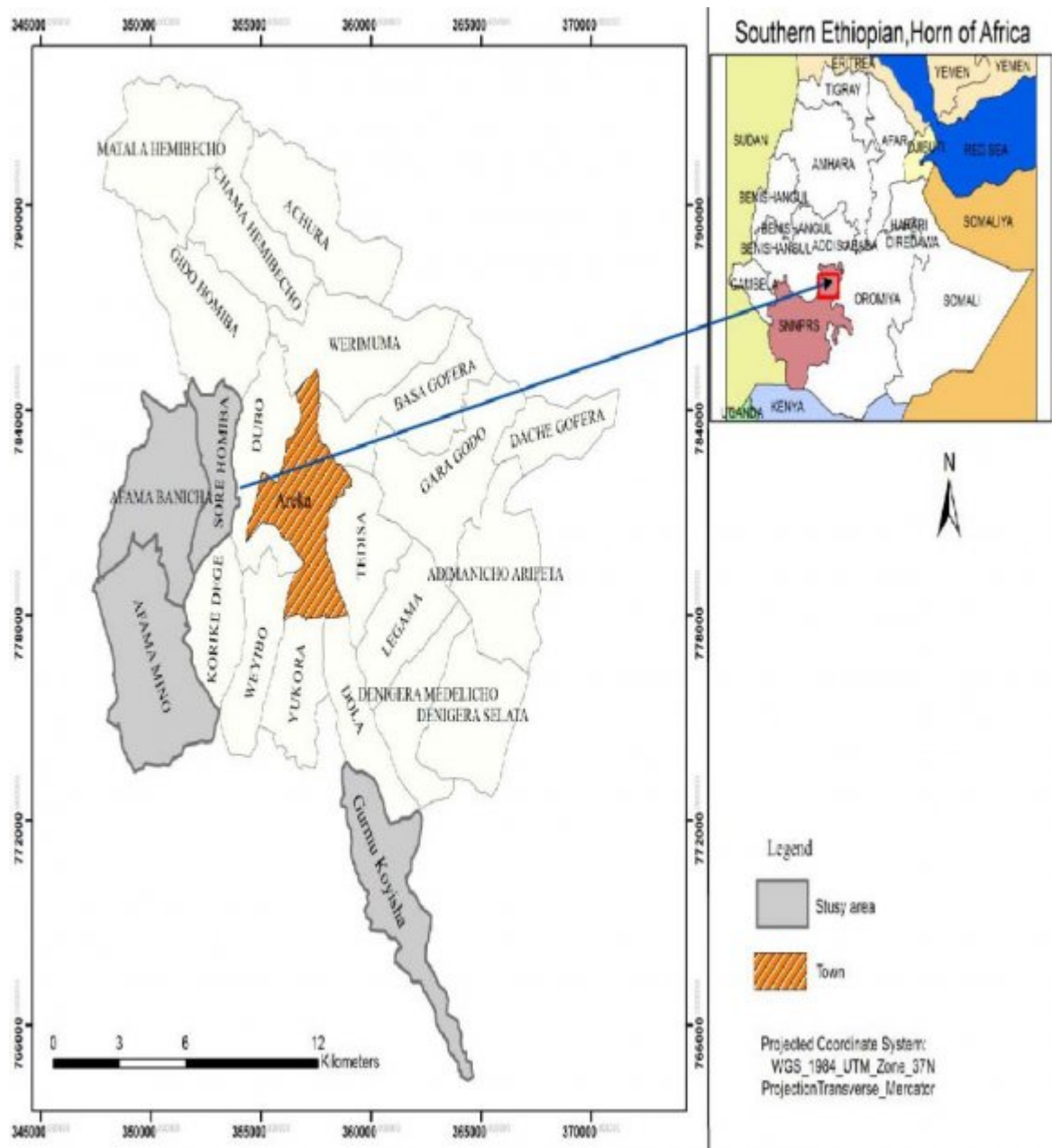


Figure 1:

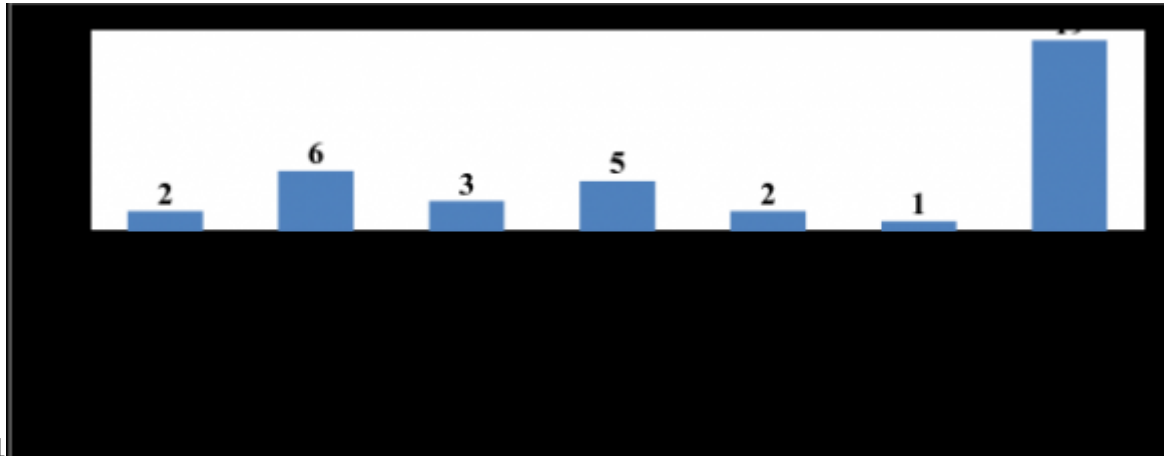


Figure 2: Figure 1 :

? It helps the administrators and municipality workers of the town to take the information about urban growth and conducted problems.

? It serves as a basis of the study to conduct for research study.

? It forward some result to surrounding peasants who affected directly or indirectly by urban expansion in area.

? It provides information for those who will like to conduct detailed and reliable studies on the urban expansion impact on the agricultural lands.

[Note: e) Scope/Delimitation of the Study]

Figure 3: ?

5

N	o	Age	Sex Male	Female	Total	Percent
1		<20	-	-	-	-
2		20-30	16	12	28	41.2
3		31-40	11	9	20	29.40
4		41-50	6	6	12	17.64
5		51-56	3	2	5	7.4
6		>66	2	1	3	4.4
		Total	42	26	68	100

Source: Field Survey, 2016

Figure 4: Table 5 .

5

			Year 2017
			59
Age and Sex Composition of Respondents			Volume XVII Issue II Version I (B)
2: Educational Level of Respondents Educational level Frequency Percentage			Global Journal of Human Social Science -
Cannot read and write	4	5.9	
Read and write	14	20.6	
Grade 1-4 class	16	23.52	
Grade 5-8 class	13	19.11	
Grade 9-12 class	12	17.64	
Above grade 12 class	8 + =9	13.23	
Total	68	100	
			Source: Field Survey, 2016

Figure 5: Table 5 .

5

4: Occupation of Respondents		
Occupation level	Frequency	Percentage
Unemployed	3	4.41
Government employer	10	14.70
Agriculture	27	39.70
Trade	24	35.29
Private sector	4	5.88
Total	68	
Source: Field Survey, 2016		

Figure 6: Table 5 .

5

5: The Major Causes of Urbanization		
Causes of urban expansion	Frequency	Percentage
Infrastructure access (road market, education and health centers, etc	19	27.94
Natural increases	6	8.82
Rural-urban migration	34	50
Reclassification of rural settlement	9	13.23
Total	68	
Field Survey, 2016		

Figure 7: Table 5 .

5

Negative impacts	Frequency	Percentage
Loss of agriculture land	27	39.70
Expansion of crime	7	10.29
Displacement of peoples	14	20.58
Environmental pollution	18	26.47
Housing problem	2	2.94
Tot al	68	100

Source: Field Survey, 2016

Figure 8: Table 5 .

5

Advantages of urban expansion	Frequency	Percentage
Creation of job opportunity	28	41.17
Advance in communication	12	17.64
Electric power and health access	18	26.47
Transportation and education services	10	14.70
Total	68	

Figure 9: Table 5 .

5

Health facility	8: Health Facility of the Town		
	Government	Non-government	Total
Health center	1	-	1
Clinics	1	10	11
Drug house for cattle	1	2	3
Private pharmacy	-	10	10
Hospital	-	1	1
Other	-	-	-

Source: Field Survey, 2016

Figure 10: Table 5 .

.1 Acknowledgement

- 463 love encouragements and support enable me to finish this research study or design.
- 464 [Fessesu ()] , Detachew Fessesu . 2001. Urban Development in Ethiopia Addis Ababa. AAU.
- 465 [Habitat ()] , U N Habitat . *Global Report on Human Settlement Nairobi* 2003.
- 466 [Boloso Sroe Agricultural Office ()] , *Boloso Sroe Agricultural Office* 2006.
- 467 [Wolaita Zone Urban Development Office ()] , *Wolaita Zone Urban Development Office* 2015.
- 468 [Edward (1998)] *Are Cities dying Retrieved on*, Glaeser Edward . 1998. May 3/2014.
- 469 [Areka Town 16. NUPI ()] [www.Nupi.gov'et./report.htm](http://www.nupi.gov.et/report.htm) *Areka Town 16. NUPI*, 2008. 2003.
- 470 [Toddaro ()] *Economic Development-Essex Person Education Limited*, Toddaro . 2000.
- 471 [C (2007)] *Environmental Impact of Urban Expansions*, Yahoo.com/the Environmental Impact-Urban sprawl
- 472 *Retrieved on*, C , Fiore . 2007. April 12/2014.
- 473 [Wough ()] *Geography, Integrated approach UK*, Wough . 1990. Thomas Nelson and Sons Ltd.
- 474 [Cheru ()] *Globalization and Uneven development in Africa*, F Cheru . 2005. UCLA Globalization Research
- 475 Center -Africa
- 476 [Growth of the Worlds Rural to Urban Population New York, Department of International Economic and Social Affairs ()]
- 477 *Growth of the Worlds Rural to Urban Population New York, Department of International Economic and*
- 478 *Social Affairs*, 1969. UN.
- 479 [Harday ()] Harday . *environmental Problems in an Urbanizing World Landon-UK Earth Scan*, 2001.
- 480 [Hall ()] *Introduction to Urban Geography*, Hall . 1973.
- 481 [Girma ()] *Living with Urban Environmental Health A*, Girma . 2004. AU Ashgate
- 482 [Linton ()] *Millionaire Today and Yesterday Geography*, L Linton . 1957.
- 483 [Grantsulka ()] *Opportunity and Exploitation in Urban Labor Markets*, Grantsulka . 2008. London Over Seas
- 484 Development Institute
- 485 [Farida (2012)] *Pros and Cons of Urbanization Retrieved on*, Rashid Farida . 2012. 8 April 2014.
- 486 [Potts (2009)] *The Slowing of Sub-Saharan Africa Urbanization Retrieved on*, D Potts . 2009. April 1/2014.
- 487 [The World Population Growth in Urban Area ()] *The World Population Growth in Urban Area*, 1987. UN.
- 488 [UNFPA (2007) Urban and Rural Development] *UNFPA (2007) Urban and Rural Development*,
- 489 [Balchin ()] *Urban Land Economics and Public Policy London*, Balchin . 1995. Mac Millan Palgrave.
- 490 [Balk ()] *Urbanization and Ecosystem London*, Balk . 2008. UK Earth.
- 491 [Urbanization in Least Developed Countries rived on BBC (2014)] 'Urbanization in Least Developed Countries
- 492 rived on'. *BBC* 2014. April 12/2014.
- 493 [Park ()] 'Variation in the Urban Heat is Land Intensities Affected by Geographical Events'. Park . *Ibarki*
- 494 *Environmental Research Center* 1987. 2011. May/ 2014. 18. (Plant et Slums) (The Third World Mega Cities,
- 495 Block Commentator)
- 496 [Devies (1972)] 'World Urbanization (1950-70) UL Retrieved on'. Devies . *En. Wikipedia org/Urbanization*, 1972.
- 497 April 2014.
- 498