

Assessing Socio-Economic Impact of Rural-Urban Migration in Sodo Town, SNNPR Ethiopia

Mefekir Woldegebriel¹

¹ Wolaita sodo universty

Received: 7 December 2016 Accepted: 1 January 2017 Published: 15 January 2017

Abstract

Migration is a form of geographical mobility between one geographical units (origin) to a certain destination generally involving a change of residence from a place to the place of arrival (destination). It involves a permanent or temporary change of residence from one neighborhood settlement (Administrative Unit); this process is also out migration. Moving to a particular location is defined as immigration (Kebede, 1994). In the past years rural to urban migration in developed countries grew during the time of industrialization, when more mechanized farming needed few agricultural workers in the rural area and when there was demand for labor in urban based industries. But this is not always the case in developing countries are more a function of rural problems than the urban attractions (Kenfe, 2001:46).

Index terms—

1 Introduction

a) Background of the study igration is a form of geographical mobility between one geographical units (origin) to a certain destination generally involving a change of residence from a place to the place of arrival (destination). It involves a permanent or temporary change of residence from one neighborhood settlement (Administrative Unit); this process is also out migration. Moving to a particular location is defined as immigration (Kebede, 1994).

In the past years rural to urban migration in developed countries grew during the time of industrialization, when more mechanized farming needed few agricultural workers in the rural area and when there was demand for labor in urban based industries. But this is not always the case in developing M countries are more a function of rural problems than the urban attractions ??Kenfe, 2001:46).

Like other developing countries of the world, our country Ethiopia, the process of migration is not a new phenomenon. The various population induced by trade, slave trade, national disaster, war-fare, famine and etc are mark the history of the country. The country has been undergoing rapid urbanization particularly during the past four-five year ??Kebede, 1994:34) As different studies show migration related impacts are more serious in our country, more specifically, Sodo town, a place where this issue is very common led to a number of socio economic impacts in the community. Therefore, this study focuses on assessing the issue of rural to urban migration in sodo town.

2 b) Statement of the problem

In Ethiopia like other less developed countries large numbers of people continuously migrate to urban centers. This is because of the pushing rural problem and pulling urban attractions respectively, the major rural problems are poor employment, natural disaster, harsh climate, law wages, political instability and housing shortage and etc, on the other hand urban pulling factors such as political stability, improved housing, high living standard, high wages, employment opportunity, favorable climate, fair services and etc that attracts people towards urban areas ??Nigatu, 2004:125). The problem of migration in developing countries in now a boutduntly clear because

7 B) TYPES OF MIGRATION

43 the rate of rural to urban migration continue to exceed the rate of job creation and the absorption capacity of
44 both industry and urban social service ??Todaro, 1969:334).

45 Migration to cities and towns accelerates existing problems adding to urban unemployment, increasing pressure
46 on housing resources, traffic congestions social and psychological stresses amongst the urban population and
47 poverty is wide spread and expanded in cities and towns of Ethiopia ??Birru, 2004:125).

48 In Wolaita Zone there are four ten woredas and three city administration. Sodo town is administrative and
49 trading center it is located at the center of roads to and seven entering gate. This geographical location of the town
50 and other facilities has been encouraging a number of rural to urban migration searching for better employment,
51 public service and better living conditions (Nigatu: 2004) A number of migrants have been migrated to Sodo
52 town from sodozuriaworeda, Damote Gale worda, Demote weydeworda, Areake town, Boditi town Humboworda,
53 Damote sore worda, off aworda, kendo dedayeworda, Bolso sore worda, Bolosobonbeworda, Damotepulase kendo
54 koyesheworda, Duguenefange and Dawero zone and Gamogofa zone etc. This numbers of Migrants have been
55 observed creating a number of challenges such as over population unemployment, housing problems, congestion
56 in social services, health problems, drug abuse, expansion of different criminal activities and etc (Nigatu, 2004).

57 Some studies have been conducted regarding socio economic impacts of rural -urban migration in the town.
58 However, it could not bring remarkable solution to problems in the town and unable to give fair enough
59 information to local areas people, administrative bodies and nongovernmental organizations, therefore a student
60 researcher tried to fulfill the gaps that was observed in the previous studies and attempted to provide a solution
61 to the problems for the concerned bodies.

62 3 c) Objectives of the study i. General objective

63 The general objectives of this study are assessing the socio economic impacts of the ruralurban migration in Sodo
64 town, in Wolaita Zone, SNNPR, Ethiopia.

65 4 ii. Specific objectives

66 The specific objectives of this study are to:-? To identify the major socio economic impacts of rural to urban
67 migration in the destination area.

68 5 Chapter Two

69 6 II.

70 Review of Related Literature a) Definition and concepts of migration Migration is difficult to define, but it
71 involves a permanent or quasi-permanent change in residence of twelve months or more. Different scholars and
72 disciplines define migration differently. According to the United Nations multilingual demographic dictionary,
73 migration is a form of geographical mobility between one spatial origin and another, generally involving a change
74 of residence from place of origin to the place of destination ??Abuzar, 2001).

75 According to Befkadu and Berhanu (2000), Migration is the movement of people in space often involving
76 a change in the place of residence. For John R. (2003) Migration is defined as any permanent changes in
77 residence. It involves the detachment from organization of activities at one place and the movement of the
78 total round activities to others. Thus most aspect of migration is that it is spatial by definition. Most Year
79 2017 demographers argue that migration must involve an essential permanent territorial shift in residence to be
80 distinguished from mobility, hence travelers and commuters are excluded from migration. To joy a movement
81 migration, it should to have involve permanent change in place of residence, Demographers lack single operational
82 definitions for migration because it occurs under different conditions. However, although heterogeneous factors
83 make a universal definition in possible in general migration is in which an individual {group of people} shift their
84 residence from one place to other. Migration can be personal who move to another area city or town with in
85 a nation, job seeker who move to another country (region) for better economic opportunities (Kebede, 1994),
86 A part from its spatial context migration also implies the disruption of work, schooling social life and another
87 socio-economic condition Migration can also be defined as a movement of people in or migration adds to (subtract
88 from) areas on population depending on whether there is little or natural increase from the excess of birth over
89 death ??Nigatu, 2004: 124).

90 7 b) Types of Migration

91 In broadly speaking there are two types of migration based on the area of space affected by migratory movement.
92 These are internal and international migration i. Internal migration Internal migration is the movement of people
93 within the territorial jurisdiction of sovereign countries. It is also referred to as domestic or local migration.
94 They have four types of internal migration can be identified rural-urban migration, rural migration, urban-urban
95 migration and urban -rural migration.

96 The rural-urban migration is urban ward population movement from rural areas or country side caused by
97 rural push factors and urban pull factors. This is the main features of LDCS. High rural population density
98 aggravated by growing poverty is the main push factors the compels rural population to leave their place of
99 origin such rural areas suffer from horrifying poverty, unemployment, low and uncertain wages, land shortages

100 and land lessens and poor facilities for educators health, recreation and other service are also equally important
101 push factors. By compares, the pull of the urban area may include better employment opportunities: regular and
102 higher wages, fixed working hours, better amenities of living, facilities for education and socio cultural activates,
103 But the growing movement of people from rural to urban areas has resulted in rapid rate of urbanization and
104 rural de-population.

105 8 ii. International Migration

106 International migration is a kind of human movement across the international boundary nations. It may take, the
107 form of international or intra continental; it could happen voluntarily or compellation. It occurs in response to
108 an equal distribution of human and physical resources. The most important of international migration in terms
109 of volume and frequency of movement of people was the Trans-Atlantic European movements. This happened
110 between 17 to mid 20 th century.

111 The second wave of Trans -Atlantic European movement was directed to the temperate. Grass lands of
112 America, South Africa. Australia and New Zealand. This last one was the biggest human movement in history
113 that involved about one fifth of Europeans total population.

114 When migrant cross an international boundary the movement is called international migration. However, if
115 the movement is within a national territory, it is referred to as internal migration. A movement in which migrant
116 arrives at the last destination after a series of short term moves to other location is refers to step migration.
117 When people move out with the intention of returning back to their place of origin after a few months or season
118 or more, this Movements is called seasonal migration seasonal migration takes places commonly in rural Ethiopia.

119 During peak and slack seasons of agricultural labor migration can take the form of refuge migration, when
120 people move for political reasons, war, ethic confects and discrimination or religious persecution or evacuees like
121 earth quake, volcanic eruption, flooding drought etc and resettlement migration, when people are displaced by
122 wars, natural climates etc are moved by governmental to new location generally, given assistance in order to
123 establish themselves there in.

124 9 c) The causes of Migration

125 The researcher have shown that it is usually is not just one factors, but combination of factors have led people to
126 move from their areas of origin to other destination, in the case of rural-urban migration, some of the key factors
127 some migration literatures showed that because of poverty millions of people are driven from their home land to
128 other destinations (De BLIJ, 1996).

129 In Ethiopia in particular, due to both economic and non economic reasons, many people are forced to migrate
130 from are place to another, for example, from the economic factors, un pleasantly and intolerable living and
131 working conditions and problems like population pressure, scarcity of farm land, environmental degradation and
132 declining productivity and overall economic deterioration forced a number of people to migrate from rural to
133 urban area in search of employment, better job opportunities and better living conditions ??Assefa, 1999).

134 Concerning the economic factors 'Todaro's expected income' Model of migration worth mentioning here. In
135 his most pronounced economic theory of migration, ??odaro 91969, 1976) behavior of rural to urban migration in
136 terms of the income differentiation and the migrants expectation of obtaining an urban job in the urban formal
137 sectors. Todaro's Migration Model has four characteristics 1. The fact that migration is stimulated primarily by
138 rational economic conditions of relative benefits and costs mostly financial but also psychological. 2. the decision
139 to migrate depends on expected rather than actual urban rural wage differentials 3. The probability obtaining of
140 an urban job is inversely related the urban un employment rate 4. Migration rate in excess of job opportunity
141 growth rate are not only possible but also rational and even likely in the face of wide urban rural expected income
142 differential high rate of un employment are, therefore, inevitable outcomes of the serous imbalances of economic
143 opportunities between urban rural area of the most under developed countries ??Todaro, 1969 ??Todaro, : 1976).

144 10 d) The impacts of Migrations

145 The impact of Migration is complex, depending on the types of migration involved. Generally, Migrants affect
146 not only the economic and social environment of both origin and distention areas in any types of migrations but
147 also their own living and working conditions as well (Barrett, 1992: 152).

148 e) The consequences of Migration It has widely been recognized that migration that affects the area of out
149 -migration, area of immigration movements are the expression of reallocation of human resources and physical
150 resources in both areas ??Chandana, 1999) An increase in migration to an area increases the density of population
151 of that area. These increases the areas burden up on its resources or may force the society to exploit its resource
152 more than the usual it used to. The rural Omigraants moving to the new industrial towns suffer from lack of
153 open space and relatively new dietary habits.

154 Whenever migrants arrive in groups they also bring their cultures that would result intermediary of cultures.
155 Sometimes, the physical contact of the people belonging to different racial group /families may exchange
156 genetically traits.

157 Chapter Three III.

11 Materials and Methods

12 a) Research Design

The study researcher utilized mixed approach i.e. qualitative and quantitative approach. This is because to find out how people feel about socio economic impacts of rural to urban migration in the town qualitative approach was used where as to express the problems in terms of quantity and measurements quantitative approach is used.

13 b) Sampling techniques and sample size

Regarding the sampling techniques the study researcher used purposive sampling and simple random sampling techniques. Purposive sampling is used for those informants from governmental and nongovernmental organizations because their opinion is relevant to the problem under study. Simple random sampling techniques were employed for migrant respondents. This was used because they are key informants and potential sources of information in general and the problem in particular.

According to 2007 E.C population census the total population of Sodo town was 102,922. Out of these 54,315 were males and 48,607 were females. To make the study easier the student researcher collected information from 56 respondents. From the whole respondents 30 males and 36 females were selected for interview and questionnaire.

14 c) Types and sources of data

The researcher used both primary and secondary sources to achieve the objectives of the study. The primary sources include governmental official, non-governmental organization workers and key informants Secondary sources were published and unpublished materials and internet.

15 d) Methods of data collection

To obtain sufficient information, the primary data sources were collected from government official and non-government organization workers through questionnaire and from migrant respondents by interview. The secondary data and un published materials.

i. Questionnaire

The study researcher prepared questionnaires for three governmental and three non-governmental employees prepared list of questions were distributed for the samples and they responded based on the instructions.

ii. Interview An interview was held as a method of data collection to obtain valuable information from the selected fifty migrant respondents to get information about the problem under study. e) Data collection procedure Data was collected through the following stages first questionnaire and interview were prepared in English language and translated to local language because all respondents can speak and write the language. f) Method of data analysis Year 2017

The data collected through questionnaire and interview was analyzed and interpreted by using both qualitative and quantitative method of data analysis.

16 g) Ethical consideration

There was some process before conducting the study in the area. Issues such as letter from the department to the concerned bodies, respondents feeling and characteristics and other main issues were considered to get full and genuine information from the respondents and different stakeholders. Besides the ethical consideration,

The student researcher would use clear words during the preparation of questionnaire and interview.

17 Chapter Four

IV. The town Wolaitasodo has 37 square kilometer wide and high road way passing through the town has seven gate way Five major transport routes connect Sodo with the neighboring zones and regions. These are Alaba-Shashemene (via-Boditi), Hossaina-Butajira-Addis Ababa (via-Areka), Waka-Taracha-Jima-MizanAman and Bonga (via-Bele), Arbaminch-Jinka (via-Tebela) and Goffa Sawula (via-Gesuba).

18 Description of the Study Area

19 c) Socio-economic condition

In the last five years, the socio-economic development of the town was hopeful for the development of the town. The education sector boosted to 15 The study area has characterized by different land forms like plain lands, plateau, gorges and rugged terrain system. The highest and the lowest altitude of the town from 166600-1900 meter above sea level average altitude of the town is 1800 meter above sea level. The mean annual temperature and rain fall of is maximum 29 0 C, minimum 15 0 C and 1250 mm respectively. The temperature varies in summer; the town experiences sub humid type of climate gets rainfall twice in a year. It falls during "Belg" and "Kiremt" mostly the first falls from Megabit to Mid-may and the next comes from June to the end of September .Due to the town location in the up and down, and there is weather condition varying from day to night (Tamirate, 2008).

211 Sodo town is part of south western high lands.

212 The town is established at the foot of mount Damota, 2,200 meters above sea level and from this mountain, its
213 altitude descends to all directions. The topographic feature of Sodo town contains plain lands, plateaus, gorges,
214 and rugged terrain system. The relief of the town is mainly characterized by gorges and plain lands especially
215 towards southern direction. The western, eastern, and north eastern parts of the town have undulating topography
216 affecting the flow directions of surface and ground water. The sloppy nature of the town also aggravates erosion
217 of surface soil (Solomon 2009).

218 **20 e) Demographic and socio economic characteristics**

219 According to the result of housing and population census May, 2007 sodo town has population of 102,922, out
220 of this 54,315 males and 48,617 females with the annual population growth rate about 5.3% f) Administrative
221 Structure of the Town Wolaita Sodo is the capital town of Wolaita Zone as well as Sodo Zuria Woreda. In its
222 administration jurisdiction, the town is divided into three-sub-towns The town was serving as a center for Soddo
223 Zuriaworeda under the administrative structure of previous Semen Omo zone until 2000. Since 2000, Sodo town
224 became the capital of Wolaita administrative zone. This status of the town is believed to exert considerable
225 impact on the concentration and growth of population. Because, several Offices and departments that have not
226 been existed before the new administrative structure were established and resulted in high inflow of civil servants
227 to the town (Habitamu, 2013).

228 g) The land use The total amount of land use of the town is 37 square kilometers, the current existing urban
229 boundary of the town is about 1,333.09 hectors out of which about 70% is found to be already built up and
230 the remaining 29.25% non-built up area .Concerning the land use pattern most of the land used for residential
231 purpose, the rest of the land used for commercial and industrial purpose. The central part of the town has
232 good road accessibility and used for commercial and industrial purpose and the peripheral area is reserved for
233 industrial purpose, where they are few plastic, floor factors and of gas oil reserved is found (Habtamu, 2013).

234 **21 Result and Discussion**

235 The researcher analyzed the already collected data and showed in the following three major parts, namely, the
236 demographic characteristics of migrants the social status of migrants and the consequence of migration.

237 **22 a) Demographic characteristics of migrants**

238 In this part of the data analysis the demographic characteristics of the respondents such as sex, marital status and
239 age are analyzed. The study has tried to identify the sex groups whether females or males are more vulnerable
240 to migration. As indicated in the above table, the proportion of male migrants is greater than female migrants.
241 From the total respondents male migrants account 70% and the female migrants account the remaining 30%. As
242 Abdurrahman 1987) stated "rural urban migration particularly to large cities and towns is dominated by males
243 than females since males are sensitive to migrate than females"

244 **23 Volume XVII Issue I Version I**

245 This show that males are highly migrant than the females because females in rural areas are mostly dominated
246 by the society to be home worker.

247 **24 ii. Age distribution of migrants**

248 The researcher tried to identify that which group was highly migrate as shown in the bare graph below Bare
249 graph indicates that the high proportion of migrants is categorized under the age of 22-32 which accounts 64%
250 of the total migrants. The second largest migrants are found under age group of 11-21 having 28% of the whole
251 migrants and those migrants under the age of 33-43 are ranked in the third places with 6% of the total migrants.
252 The remaining 2% of the found in the age group of the above 43.this indicates that people within the age integrity
253 and as showed by many demographers people with in this age are highly sensitive to change.

254 Source: Field survey may, 2016 iii.

255 **25 Marital status of the migrants**

256 The study examined migrants based on marital status to know whether the majority of the migrants are single,
257 divorced, married or widowed. As shown on the table 1.4 48% of the total migrants are found under the
258 educational status of grade 1-6 while the migrants who are illiterate can't read and write and those who are in
259 grade 7-8 accounts 28% and 18% of the total migrants respectively. 6% of the migrants have educational level of
260 grade 9-10. Therefore table shows that most of the migrants are under the educational status of grade 1-6 and
261 as stated by ??odaro (1969)

26 Volume XVII Issue I Version I

27 Respondents Religion

As indicated on the table most rural-urban migrants are single having 72% of the total number of migrants. Those migrants who are divorced are ranked in the second place having 12% of the total migrants. The remaining 10% of the migrants are married and the migrants who are widowed account 6% of the total number of migrants. This indicates that the single or un married migrants are more vulnerable to migration than other portion of the society; As Lewis (1998) showed the singles have not that much family responsibility and they are highly vulnerable to motivation given by friends, who are early migrants. iv. Educational status of migrants This is the part of analysis that deals with the educational status, religious, housing and health conditions of migrants.

28 (B)

Global Journal of Human Social Science -Year 2017

As indicated in the above graphs them a majority of the migrants having 52% of the total respondents are followers of protestant religion and 36% of the migrants are the followers of orthodox religion. b) Housing status of the migrants From the below table we can understand that most of the migrants who account 60% of the total migrants do not have the access to housing in the destination area and the remaining 40% have the access to housing. The migrants who do not have the access to housing live on street (avenue).

The remaining catholic and Muslim religion followers account 8% and 4% of the total number of migrants respectively. Source: Field survey may, 2016 As the above 1.8 shows that most of the migrants who cover 52% of the total migrants did not have information about Sodo town before they come, where as 48% of the total migrants had information about Sodo town earlier. As the above table 7.9 indicates the majority of the migrants who cover 50% had got information about Sodo town from early migrants, while 30% of the migrants got information from people who lead their life going and coming to Sodo. The remaining 12% of the migrants got information because self visiting of the town, where as migrants who got information from mass media account 8% of the total migrants i. Problems of Sodo town Due to high rate of rural -urban migration in Sodo town the following problems have been identified: un employment, Vulnerability to streets, and position, environmental effects of migration (i.e. Huge waste, crime, violence's, shortage of housing, illegal trade (contraband) etc. Concentration of people which can be due to migration or natural increase in urban areas where regarded as essential for the economy of scale. However, the available data shows that migration of the people have different socio-economic impacts.

29 Distrubation of respondents by housing status

ii. Problems on the origins According to the information from the respondents and the key information's the effect of migration is not limited only to urban (destination) place but migration also has a negative impacts in rural areas /place of origin). The identified problems include:-? Loss of labor forces relevant to agricultural productivity ? Loss of assistant to old age parents ? Some cultivable lands are left underutilized because of migration of productive labor force ? It also results in further migration of rural people following the earlier migrants ? De population of the rural population iii. Problems on the migrants Many of the migrants have been observed facing different problems in the destination area such as low income, health problem, un employment, housing problem etc. As the table 7 indicates 40% of the migrants are faced with the problems of the low income at destination place, while migrants faced with un employment and housing problem accounts for 20% and 16% of the total migrants respectively.

The remaining 12% and 8% of the migrants were faced with discrimination and health problem, where as 4% of the migrants to other problems such has shortage of the food.

30 iv. Problems on the town's residents

According to the key informant because of large number of migrants the towns residents have been faced different problems. These problems include crimes such as theft, congestion in different infrastructural services such as rood and market instability, unemployment, pollution and cheating.

31 v. Occupational change

Even though most of the migrants were depending on parent in original area the other depends on agricultural activity, trade and other occupations. Therefore, after coming to Sodo town these migrants who were involved in agricultural activities changed their occupations and employed in other activities. The study has tried to see the current occupational status of the respondents after they migrate to the area. The migrants currently engaged in different occupations such as daily worker, shoeshine, trade and others. The figure 5 shows at daily workers occupational status covered 40% shows at daily works from the total migrants and 28% is covered by unemployed, while 22% and 8% of occupation status are covered by small trade and shoe shine respectively.

The remaining 2% of the total number of the migrants are engaged in other occupational such as messengers.

32 d) Population growth

According to the key informants, currently in Sodo town the number of population is increasing from time to time. They said that one of the majors for population growth is the rural -urban migration of many people. From different woredas and kebeles people are coming to the town with the intention of getting job opportunity, better wage and better standard of living. But whether the migrants achieve their objectives of coming to Sodo or not they became the source of population growth in the town. The researchers key informants further argued that if the trend of migration will not decrease in the coming years the current population number will also increase.

33 e) Current income of migrants

According to most of respondents the income of the migrants has not much changed they had no even better cloth from the time before migration and they live hand to mouth way of life. This is because in the town they don't get the expected job opportunities and high wage rather they are exposed to an employment and lower standard of living which could not enable them to have enough income. The government also prohibited some income providing activities by considering the activities illegal trade (contraband) i.e. selling, shoes and etc on the street.

34 f) Livelihood of the migrants before migration

The study has tried to identify the source of livelihood for the migrants in their place of origin before they came to Sodo. As table 8 shows for 22% of the migrants agriculture was used as the sources of livelihood. Out of the total number of the migrants 18% and 48% of the migrants were using trade and parent income as a source of livelihood respectively before they migrate.

The remaining migrants who were dependent on other livelihood such as living with others persons by selling their labor account 12% of the migrants. As indicated in the table most migrants were dependent on parent income as a source of livelihood before they migrate to Sodo. As indicated in the table 1.14 the major of the migrants who cover 70% out of the total migrants have the desire to return back to their original place because they didn't get the expected employment opportunity, better wage, high living standard although some of the migrants get some job, which they can't get enough income from it -following this low income and an employment problem they could not fulfill even their basic needs including clothing but 30% of the migrants do not want to go back to their original place because they have better income and employment. And they further said that the problems in the original area are worse than in destination area.

g) The Original area of the majority of Migrants According to my informants and migrant respondents responses most of the migrants who cover around 80% came from the rural kebeles and 20% from rural woredas respectively. This shows that the majority of the migrants came from Wolaita zone, woredas and kebeles this is because of the nearness of these rural woredas and kebeles to Sodo town besides unemployment problems that exist there.

35 Chapter Six

VI.

36 Summary, Conclusion and Recommendations a) Summary

Migration is a form of geographical Mobility between one geographical unit to a certain destination by permanently or temporary. In Ethiopia like other less developed countries large number of people is migrating from rural urban centers by continuously according to ??Nigatu, 2004: 125). The same is true about at Wolaita zone in Sodo town administration.

There is the importance of socio-economic importance through conducting this research as a stepping stone and become source for further studies especially in Sodo town. Also they have some of limitations are budget constant, in adequate internet, computer services and information sources.

Generally migration there is two types based on the areas are space coverage such as, Internal /domestic and International migrations. This both types of migration affect the economy, scarcity of productivity, population number with in different aspects. Those migrants not only affect the economic and social environment of both origin and destination but working activities.

Basically this research data taken from 2007 E.C population census from Sodo town and both sampling techniques and sampling size collected by using primary and secondary sources by using the questionnaires and interview.

37 The physical

The study shows that the majority of the migrants are migrated to Sodo town without any information about its employment opportunities, better wage and etc so this leads them to different socioeconomic problems in the town such as housing problem, health problems, discrimination, low income and unemployment. As the study shows most of the migrants are exposed to low income in Sodo town due to the Lawrence of better job

38 B) CONCLUSION

372 opportunity, poor wage and excess labor. Among the migrants those who had good information about Sodo, the
373 majority of them got the information from early migrants.

374 The un employment problems of barer with family, farming land scarcity, low infrastructure in rural area
375 attractive information about Sodo town, the expected better wage, job opportunity, better education and health
376 services in the urban area are the major pushing and pulling factors of migration.

377 Among the other things the most important pulling and pushing factors for migration as the study shows are
378 the unemployment problem in rural area and the expectation of job in urban areas respectively. The migrants
379 also created different socio-economic impacts on both the rural and urban areas as well. In urban areas the
380 existence of these large numbers of migrants have created un employment problems pollution, expansion of theft,
381 violence, market instability and expansion of illegal trade such as contraband.

382 Following this rural-urban migration in rural areas to many parents left without assistant and some agricultural
383 land are left unutilized and unproductive. The characteristics of study area location ally found in SNNPR and
384 varied types of topography, climate, demography structure and social services. But the most of migrants are
385 coming to Sodo town from different rural kebeles through the un employment problem that exist there.

386 38 b) Conclusion

387 The major objective of the study was to examine the socio-economic impacts of rural urban migration in the
388 case of Sodo town. The data necessary for the study were collected from a total of 56 respondents through
389 questionnaire, case study, key informants, interview and other secondary data sources. After analyzing the data
390 the researcher has made the following conclusion.

391 The study shows that most of the migrants are male, adults. Less educated Protestants and many of them
392 are unmarried by the time they migrate. This shows that people who are unmarried and who have no family
393 obligation are more likely to migrate. These migrants who are in the age 16-51 and those who are single are the
394 dominant migrants. study shows that the income of migrants is not that much changed, this is because of the
absence of job opportunities and lower paid activities. As a result of this

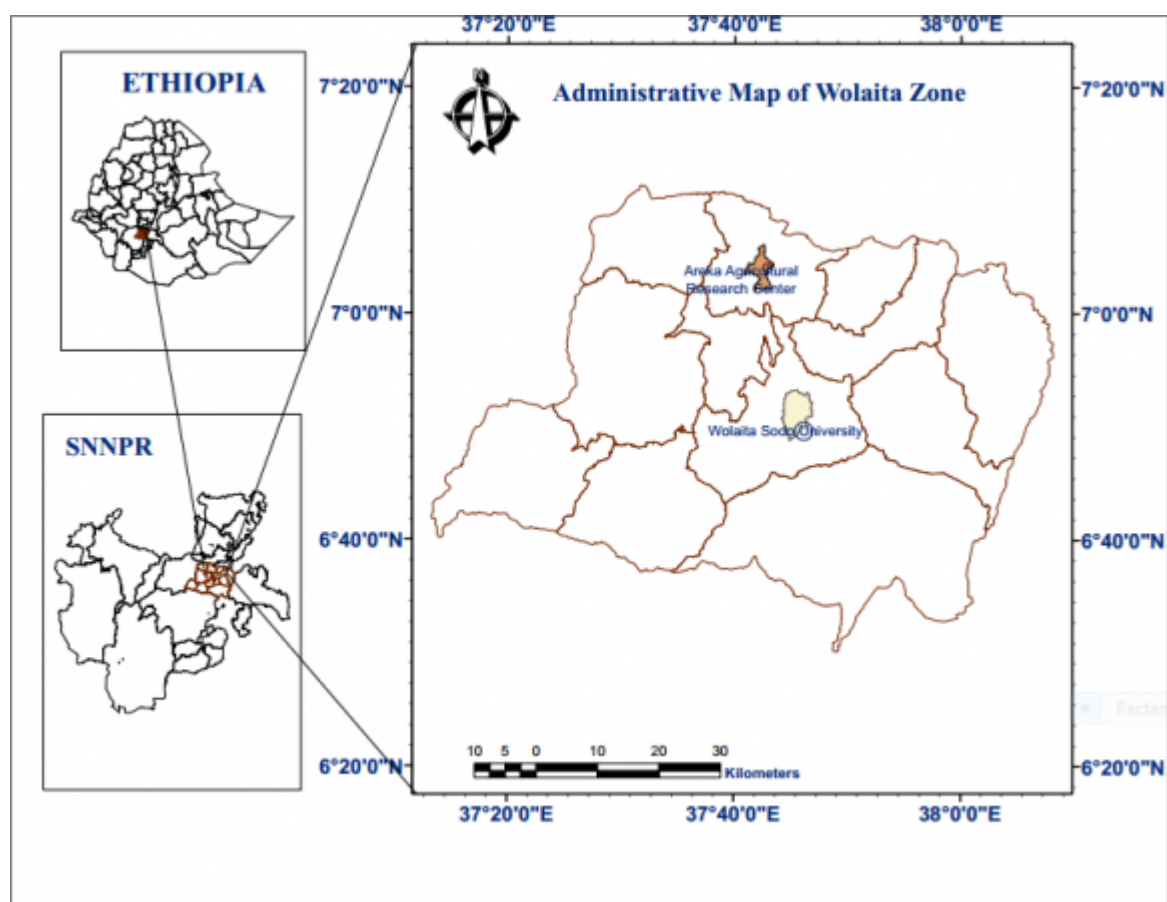


Figure 1:

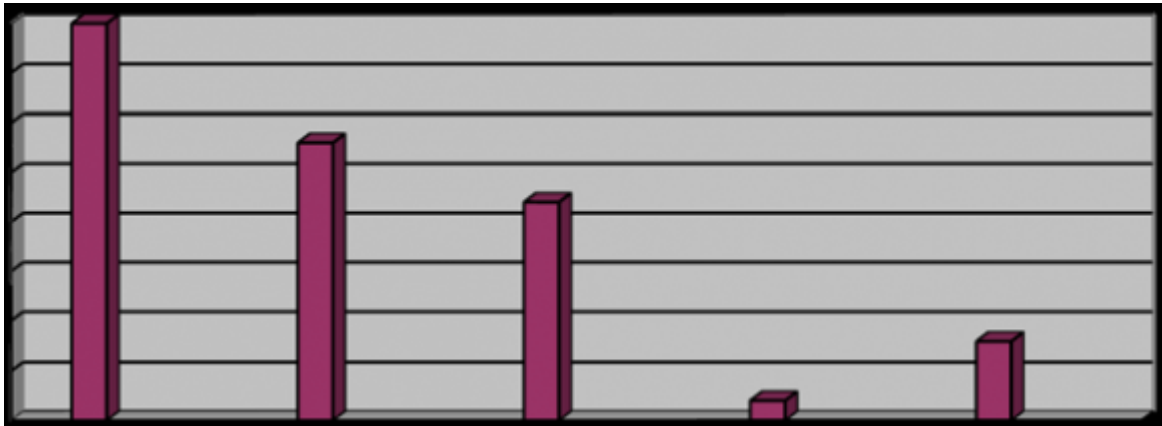


Figure 2:

¹Assessing Socio-Economic Impact of Rural-Urban Migration in So o Town, SNNPR, Ethiopia d © 2017 Global Journals Inc. (US)

²Assessing Socio-Economic Impact of Rural-Urban Migration in So o Town, SNNPR, Ethiopia d 17 Global Journals Inc. (US)

³© 2017 Global Journals Inc. (US)

⁴. <http://www.write.com/causes-consequencesof-ruralurbanmigration> Assessing Socio-Economic Impact of Rural-Urban Migration in So o Town, SNNPR, Ethiopia d

f) Scope Delimitations of the study

This study is delimited in Wolaita zone, Sodo town. The paper focused on dealing the socio economic impacts of rural-urban migration in the study area.

g) Limitation of the study

While conducting this research the researcher encountered short coming such as:-

-Unwillingness of some respondents to give full information the researcher need to ask and lack of data he researcher needs to ask.

-Budge constant

-In adequate internet and computer service

-Lack of financial time and material insufficiency

h) Organization of the study

? To identify the dominant migratory groups on the basis of age, sex, educational standards, marital status and other socio economic characters of the migrants

? To provide possible recommendations based on the findings

d) Research questions

This study tried to answer the following questions:-

1. What are the major socio economic impacts of rural to urban migration in the town?

2. Who are the dominant migratory groups on the basis of age sex, educational standards, marital status and other socio economic characteristic of the migrants?

3. What are the possible recommendations about the study?

e) Significance of the study

Conducting of the research on socio economic impacts of rural to urban migration has the following importance

Figure 3: -

There are 715 service Providing, 1016 retailer, 129 light industries of manufacturing, 153 whole sales, 150Transport sector and 30 urban agriculture businesses are operating in the town (STA, 2011)

d) Climatic Condition of the study area

Figure 4:

1

Sex	Frequency	Percentage %
Male	35	70
Female	15	30
Total	50	100

Source: field survey, 2016

Figure 5: Table 1 :

2

Marital status	Frequency	Percentage (%)
Single	36	72
Married	5	10
Divorced	6	12
Widowed	3	6
Total	50	100

Source: Field survey may, 2016

Figure 6: Table 2 :

3

Educations status	Frequency	Percentage (%)
Can't read and write	14	28
1-6	24	48
7-8	9	18
9-10	3	6
Total	50	100

Source: Field survey may, 2016

Figure 7: Table 3 :

4

Do you have good information About Sodo town?	Frequency	Percentage (%)
Yes	26	52
No	24	48
Total	50	100

Source: field survey may 20016

Figure 8: Table 4 :

5

Source of information	Frequency	Percentage (%)
Early migrants	25	50
From people who lead their by going and coming to Sodo	15	30
Self visiting of Sodo	6	12
Mass media	4	8
Total	50	70

Source: field survey may 20016

Figure 9: Table 5 :

6

Do you have any problem?	Frequency	Percentage (%)
Yes	37	74
No	13	26
Total	50	100

Source: field survey may 20016

As the table 1.10 shows the majority of destination area where as 26% of them did not face any migrants who covers 74% of the total faced different problem. problems in

Figure 10: Table 6 :

7

Problems	Frequency	Percentage (%)
Low income	20	40
Un employment	10	20
Housing problem	8	16
Discrimination	6	12
Health problem	4	8
Others	2	4
Total	50	100

Source: field survey may 20016

Figure 11: Table 7 :

8

Source of livelihood	Frequency	Percentage (%)
Parent income	24	48
Agriculture	11	22
Trade	9	18
Others	6	12
Total	50	100

Source: field survey may 20016

Figure 12: Table 8 :

9

Do you want to return back to your original place?	Frequency	Percentage (%)
Yes	35	70
No	15	30
Total	50	100

Source: field survey may 20016

Figure 13: Table 9 :

395 Year 2017 migrants are in a problem of even fulfilling their basic needs such as clothing, food, shelter and
396 education, it in turn leads to the expansion of crime such as cheating and theft.

397 The study also indicates that the majority of the migrants come from Wolaita zone rural kebeles and woredas
398 as the result of its proximity of Sodo town accompanied by the severe un employment problem in these rural
399 wored as and kebeles. Because of the absence of the expected good job opportunities, better wage, better health
400 and educational services, the migrants are exposed to different socio-economic problems even worse than the
401 problems in the rural (original areas) therefore as the study show) the majority of the migrants have the desire
402 to return back to their original area.

403 .1 c) Recommendation

404 The study shows that the rural urban migration has created different problems on both the rural and urban areas
405 such as unemployment, housing problem, Market instability, theft, low income, population and health problems
406 and etc. the researcher has given the following recommendations as well as possible means of avoiding these
407 problems and to reduce the ruralurban migration.

408 In order to reduce the rate to the migrants in urban area it is very important develop informal sectors which
409 will have a great importance in labor absorption and economic progress in urban areas.

410 The town administration should give emphasis to the city to faster its successful urban development in the way
411 that encourage private owner to open new industry at the time more balanced treatments to the development of
412 rural areas which helps to decrease the migration of people from rural to urban areas.

413 In order to reduce rural -urban migration the government should also develop infrastructural facilities to rural
414 areas such as develop the education, health, rood telecommunication, pure water and sanitation etc.

415 Developing the agricultural sector in rural area through introducing new labor incentives, agricultural
416 technologies developing irrigation facilities, increase access of fertilizer and other financial and technical supports
417 including awareness creation is also very important because the agriculture can absorb a lot of labor force and
418 can minimize the motivation to migrate.

419 Creating more urban modern sectors, job simultaneously improving rural incomes and employment opportu-
420 nities which enable the migrants not to decide to leave their original place and if they migrate, the exercise of
421 modern sector jobs in urban area can be absorb the migrants.

422 In urban areas the government should facilitate housing services for the migrants in order to protect the health
423 of the migrants and other problems happen on the migrants such as theft and rape.

424 The government should create better job opportunity by organizing the migrants to work together by creating
425 different micro and small enterprises which helps to increase the income of the migrants and reduce unemployment
426 and other theft activities.

427 Improving creating educational access to the migrants is also important in order to make them creative and
428 to involve in better income generating activities.

429 This also enables them to contribute to the development of the town because they will involve in other
430 innovative activities Awareness creation must be highly done among the migrants about the absence of the
431 expected good employment opportunities and better wage in Sodo town; it will weaken and enable them to stay
432 in their original area. The government should help financial and equipment found for rural to urban migrants to
433 settling in their original area /earlier places.

434 [Lewi ()] *rural migration and Demographic change in Liberyed, the geography rural change*, G Lewi . 1998.
435 Addison Wesley Longman Limited.

436 [Kenfe ()] *the Dynamics of economic reform in Ethiopia*, A Kenfe . 2001. New York. 1. (st edition)

437 [Birru] *91997) cause and consequence of Ruralurban labor Migration in Ethiopia the case of Arba Minch town*,
438 B Birru . MA this is Addis Ababa University

439 [Abuzer 92001). *The cause and consequences of rural urban migration in Ethiopia A*] *Abuzer 92001). The cause*
440 *and consequences of rural urban migration in Ethiopia A*, AU.

441 [and Internal Migration in Ethiopia Msc. This is Demography Canberra] *and Internal Migration in Ethiopia*
442 *Msc. This is Demography Canberra*, Australian National University

443 [Balcha ()] *Appraisal of Housing Condition: The case of Wolaita Soddo Town*, Tamirat Balcha . 2008. Addis
444 Ababa. Ethiopian Civil Service College (Unpublished M.A.Thesis)

445 [DamotaTsedal. Wolaita Sodo Town profile STA ()] 'DamotaTsedal. Wolaita Sodo Town profile'. *STA* 2011.
446 2011. Wolaita Sodo.

447 [Todaro ()] *educational and Rural -urban migration*, M Todaro . 2000. Washington DC: office of urban
448 Development.

449 [Keffa ()] 'Housing development as an instrument to alleviate urban poverty: The case of Addis Ababa'. Solomon
450 Keffa . *International Conference on Land in the Urban Landscape*, (Gothenburg, Sweden) 2005. 2017. p. .

451 [De Blij Harm ()] *Human geography culture, society and space*, De Blij Harm . 1996. New York. (th edition)

- 452 [Yohannes ()] *Integrated Management of Late blight (Photo phtorainfestans) in Potato (Solanumtubersum)*
453 *with emphasis on compost teaand Trichdermaharziamum*, Solomon Yohannes . 2009. Haramaya University
454 (Unpublished MSc Thesis)
- 455 [Gagado ()] *Making Vacant Land Work: Assessment of vacant land utilization in Wolaita Sodo town*, Habitamu
456 Gagado . 2013. Addis Ababa. Ethiopian Civil Service University (Unpublished M. A. Thesis)
- 457 [Kebede ()] *Migration and urbanization in Ethiopia*, M Kebede . 1994. Addis Ababa: MOE-ICDN.
- 458 [Assefa ()] *Migration and Urbanization in Ethiopia*, H Assefa . 2001. Addis Ababa.
- 459 [Nigatu ()] R Nigatu . *population 92005. Poverty reduction policies of Ethiopia*, 2004. Addis Ababa. population
460 and Environment, Department of RDFS: dEub University, south Ethiopia National office of