

Regarding about the Cultural Attribution of Hill Forts in Braslav Poozerye

Alexander Yegoreichenko (Minsk)

Received: 10 December 2013 Accepted: 31 December 2013 Published: 15 January 2014

Abstract

Braslav Poozerye is situated in the northwestern part of Belarus. Here hill forts mainly of hill type, at least -fortified settlements located on the eskers ridges have spread since the Late Bronze Age. The most part of hill forts in this region has been known since the end of the 19th century. Information about it is included in "Archaeological maps" created by F. Pokrovsky, but excavation of these settlements hasn't carried out till 1970's. Purposeful research of early hill forts in Braslav Poozerye has been carried out by the author since 1992. During this period he has undertaken extensive excavations at the sites of Tarilovo (Uklja), Zazony, Ratjunki, Podvarinka. Last years A. Medvedev and Z. Haritonovich announced thesis about attribution of these settlements to Dnieper-Dvina culture. But research of hill forts in this region showed that they had passed under the control of Late Hatched Ware Culture by the beginning of the 1st century AD.

Index terms— Dnieper-Dvina Culture, Early Hatched Ware Culture, Late Hatched Ware Culture, Hill fort Tarilovo, Hill fort Zazony, Hill fort Ratjunki, Settlement Pod

1 Introduction

Braslav Poozerye is located in the northwestern part of Belarus. It is characterized by intermittent hilly and flat terrain, a large amount of lakes (more than 200) and thick network of mostly small rivers. There was spreading of mainly hill forts, rarely fortified settlements located on the esker ridge starting from the Late Bronze Age.

The most part of fortified settlements is known since the end of the 19th century. Information about it is included in archaeological maps of F. Pokrovsky prepared for the IX and X Archaeological Congresses ?? Author: e-mail: yegor_alex@mail.ru Since 1992 purposeful investigation of early fortified settlements in Braslav Poozerye has been carried out by the author. During this period he has provided widespread excavations in hill forts Tarilovo (Uklja), Zazony, Ratjunki and in the settlement Podvarinka. As a result of received material and previous data the author divided one in that moment Hatched Ware Culture into two separate archaeological cultures: 1) Early Hatched Ware Culture, which was possessed of Late Bronze Age features (early stage of Hatched Ware Culture by other researchers' periodization); 2) Late Hatched Ware Culture (late stage of Hatched Ware Culture) (Yegoreichenko 2006).

Fulfilled archaeological research of fortified settlements in Braslav Poozerye allowed providing clearer delimitation between Hatched Ware Culture and Dnieper-Dvina Culture. It is assumed that the border took place from North to South along the line of hill forts Zazony -Ratjunki -Tarilovo ??Yegoreichenko 1996: 8 -11; ??egoreichenko 2006: 15). However, last years the thesis about the presence of Hatched Ware Culture population in this region was contested by some researchers. Firstly it was announced by A. ??edvedev. In 2000 at hill fort Ratjunki he finished the excavation area (60 sq. m.) of 1999 year (this excavation was started by A. Yegoreichenko) and provided new earthwork on the area of 96 sq. m. As a result A. Medvedev concluded that the site had had Dnieper-Dvina Culture attribution on the basis of his own small volume excavation. The only thing he admitted was "some influence of Hatched Ware Culture in the pottery assemblage" ??Medvedev 2002: 156 Pottery of the hill fort on the base of technique of surface treatment is represented by following types: 1) hand-made smooth vessels of Dnieper-Dvina Culture; 2) hand-made hatched pottery of Hatched Ware Cultures;

3) hand-made smooth, coarse and plastered vessels dating the middle -third quarter of 1st millennium AD (Tab. 1). Two last-mentioned were typical for top layers and it is not interesting for this study.

Dnieper-Dvina pottery was situated mainly into bottom deposits of occupation layer. They are divided into jar-shaped and slightly-profiled pots by shape (Fig. 1). Their ratio was approximately equal into IX -X stratums. Slightly-profiled pottery prevailed into VIII stratum and jar-shaped vessels were in the majority on the contrary into VII stratum. *1 -jar-shaped, 2 -slightly-profiled, 3 -carinated vessels.

Hatched pottery is known since VIII stratum, but it prevails into VII -V stratums. Hatched vessels are divided into three groups by shapes of their rims: 1) jar-shaped; 2) slightly-profiled; 3) carinated (Fig. 2). It should be mentioned that rims of first and second groups are sporadic. Carinated pots prevailed. Basing on those observations the author concluded that the hill fort Tarilovo (uklja) settlement of Dnieper-Dvina population was burned by newcomers (Yegoreichenko 1996: 10).

2 III.

3 Hill ort Zazony

The hill fort is located at southern outskirts of the village, on the top of the hill-outlier, height of which is 8 meters above the surrounding terrain. It was investigated by A. Yegoreichenko in 1995 -2000. During that period 434 sq. km. were studied. In the result of excavation it was determined that the settlement had been monocultural in the Iron Age. There is no material of Dnieper-Dvina Culture at the hill fort. However, there are finds dating since third quarter of the 1st millennium AD for the middle of 11th century as well as everywhere in this region.

Pottery assemblage of hill fort Zazony was formed as well as at other fortified settlements in this territory from three basic groups. Jar-shaped and slightly-profiled vessels were dominant (Tab. 2, Fig. ??, 4). Smooth pots of these shapes prevailed in upper stratums. They don't have any relations to the classic Iron Age. Chronologically smooth vessels are linked to pottery of the unfortified settlement located on the foothill and are dated to the second half of 1st millennium AD. Cultural characteristic of this material is associated with the Balts of the middle -third quarter of 1st millennium AD and Smolensk-Polotsk Long-Barrow Culture of the last quarter of 1st millennium AD. Hatched vessels are represented by three types. Dominant group was jar-shaped ware (Tab. 2). The second place by number is slightly-profiled pots. Carinated vessels were found in small amount in upper deposits of occupation layer.

IV.

4 Hill ort Ratjunki

The hill fort is situated at southern outskirts of the village, on the top of the hill-outlier, height of which is 8 -12 meters above the surrounding terrain. In 1978, 1979, 1981 L. Duchic recovered 252 sq. km. at platform of the hill fort. In 1999, 2001 -2007 excavation of the settlement was provided by the expedition of Belarusian State University under the leadership of A. Yegoreichenko. In the course of investigation 854 sq. km. were studied. In the result of excavation it was revealed that the settlement includes layers dating since the end of 2nd millennium BC for the 13th century AD. Duration and intensity of residence didn't contribute to the clarity of stratigraphic analysis. Unfortunately, the occupation layer was very mixed.

Deposits of Late Bronze Age and Iron Age belong to three archaeological cultures: Dnieper-Dvina Culture, Early Hatched Ware Culture, and Late Hatched Ware Culture. Rims of smooth and hatched vessels were distributed in the following way (Tab. 3). However, it should be recognized that fragments of upper parts of vessels belong not only to Dnieper-Dvina Culture, but also to layers of the second half of 1st millennium.

Jar-shaped ones prevail among rims of Dnieper-Dvina Culture (Fig. 5). They are either vertical, or turned-in. Some rims were ornamented by two ways. There were holes below lips of rims (Fig. 5: 2) or dotted impressions inflicted at regular intervals in one line (Fig. 5: 1, 6) or at some combinations (Fig. 5: 3).

Slightly-profiled pots of Dnieper-Dvina culture belong to two types. Some of them have short slightly inverted rims (Fig. 6: 1, 3), other have elongated vertical or inverted rims (Fig. 6: 2, 4 -7). The ornamentation is the same as that of jar-shaped vessels: holes and dotted impressions (Fig. 6: 2, 4 -7).

Jar-shaped and slightly-profiled pots are typical for the pottery of Early Hatched Ware Culture. Moreover jar-shaped vessels prevail (Tab. 3). Vertical rim and disordered hatching of entire surface are typical for these ones. Some specimens have comparatively large dotted impressions inflicted in one line (Fig. ??: 1, 3, 7). Slightly-profiled pots are characterized by vertical or inverted rims. Their bodies are covered by chaotic hatching (Fig. ?? Singular carinated pots are typical for Late Hatched Ware Culture. Their concentration was observed into II -V stratums (Tab. 3). These vessels are divided into two groups by profiles of their upper parts: 1) with straight turned-in rims (Fig. 8: 3, 5; Fig. ??: 4); 2) with vertical rims (Fig. 8: 1, 2, 4; Fig. ??: 1, 2, 5). Hatching on carinated vessels has regular outlines in contrast to pots of Early Hatched Ware Culture. Usually it was inflicted from the ripple to the bottom and had vertical orientation. Other ornamentation is not characterized for this pottery as well as in northeastern Lithuania and southwestern Latvia. investigated before 2010. During their inspection it was revealed that the occupation layer was slight and was dated to the very end of Late Bronze Age mainly to Iron Age. Settlement Podvarinka was located at southern part of the long esker ridge. Its western part was damaged by trenches and pillboxes of the First World War. The occupation layer was traced approximately throughout 100 m and its thickness was on average 0.3 m. It was mounted to 1.1 m

only in three hollows. The occupation layer included extremely few findings, although items are dated since the end of 1st millennium BC for 11th century AD.- IX 2 1 - - - X 3 - - - - XI - - - - - XII 4 2 1 - - XIII 5 1 1 - - XIV 1 - - - - Subsoil 42 -3

Interest for us pottery material as well as from other fortified settlements belongs to three archaeological cultures: Dnieper-Dvina Culture, Early and Late Hatched Ware Cultures (Tab. 4). *1 -jar-shaped, 2 -slightly-profiled, 3 -carinated vessels.

Fragments of smooth Dnieper-Dvina pottery were situated into bottom layers and belong mainly to jar-shaped vessels (Fig. 10). Findings of jar-shaped and slightly-profiled pots of Early Hatched Ware Culture were also singular (Tab. 4). The overwhelming majority of

5 Settlement Podvarinka

Settlements located on the esker ridge are rarely found archaeological resources. Throughout Braslav District they are known in Edagaly, Slobodka, and Podvarinka. Such settlements hadn't been vessels were represented by carinated shapes of rims (Tab. 4; Fig. 11)



Figure 1:



Figure 2:

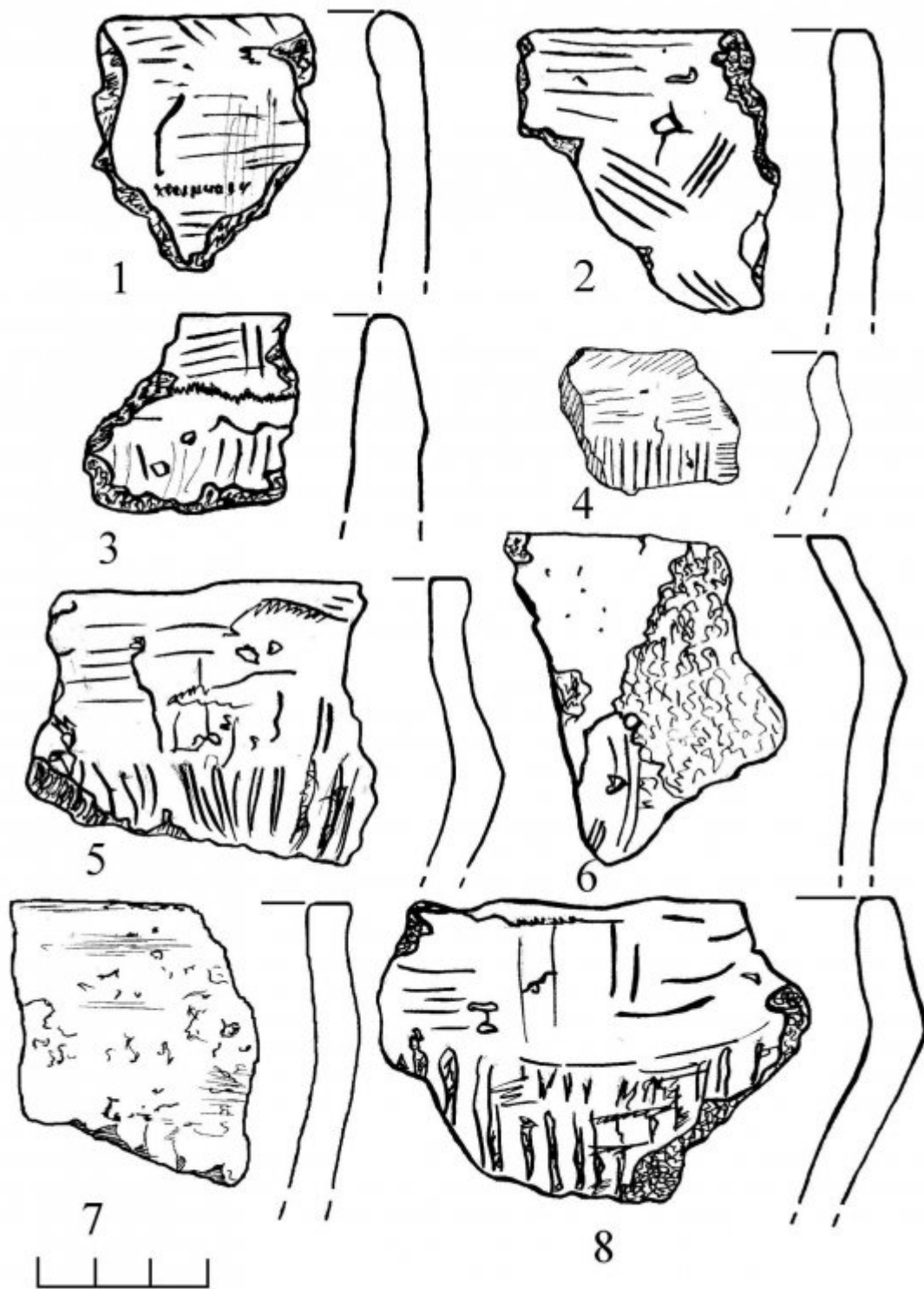


Figure 3: Global

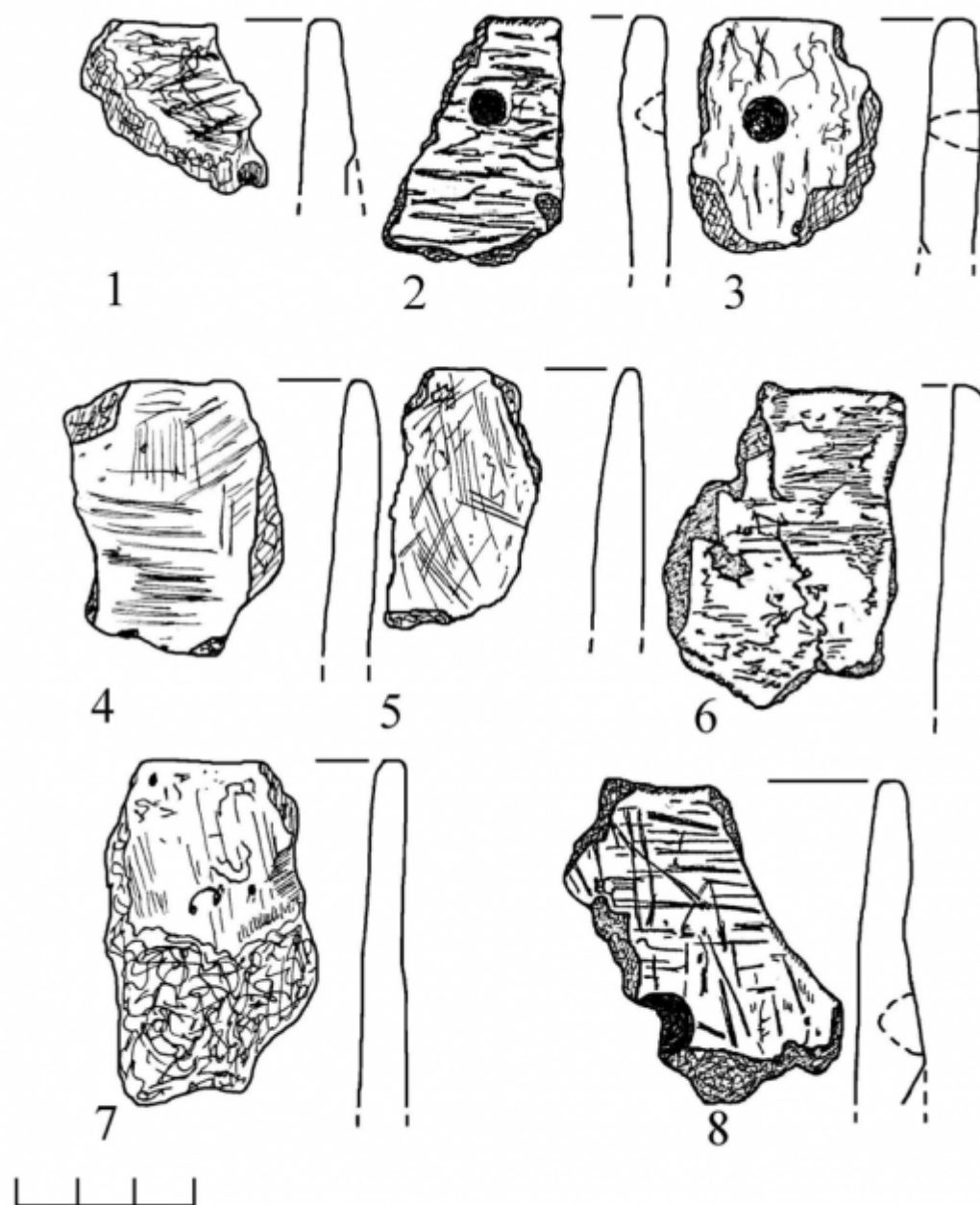


Figure 4:

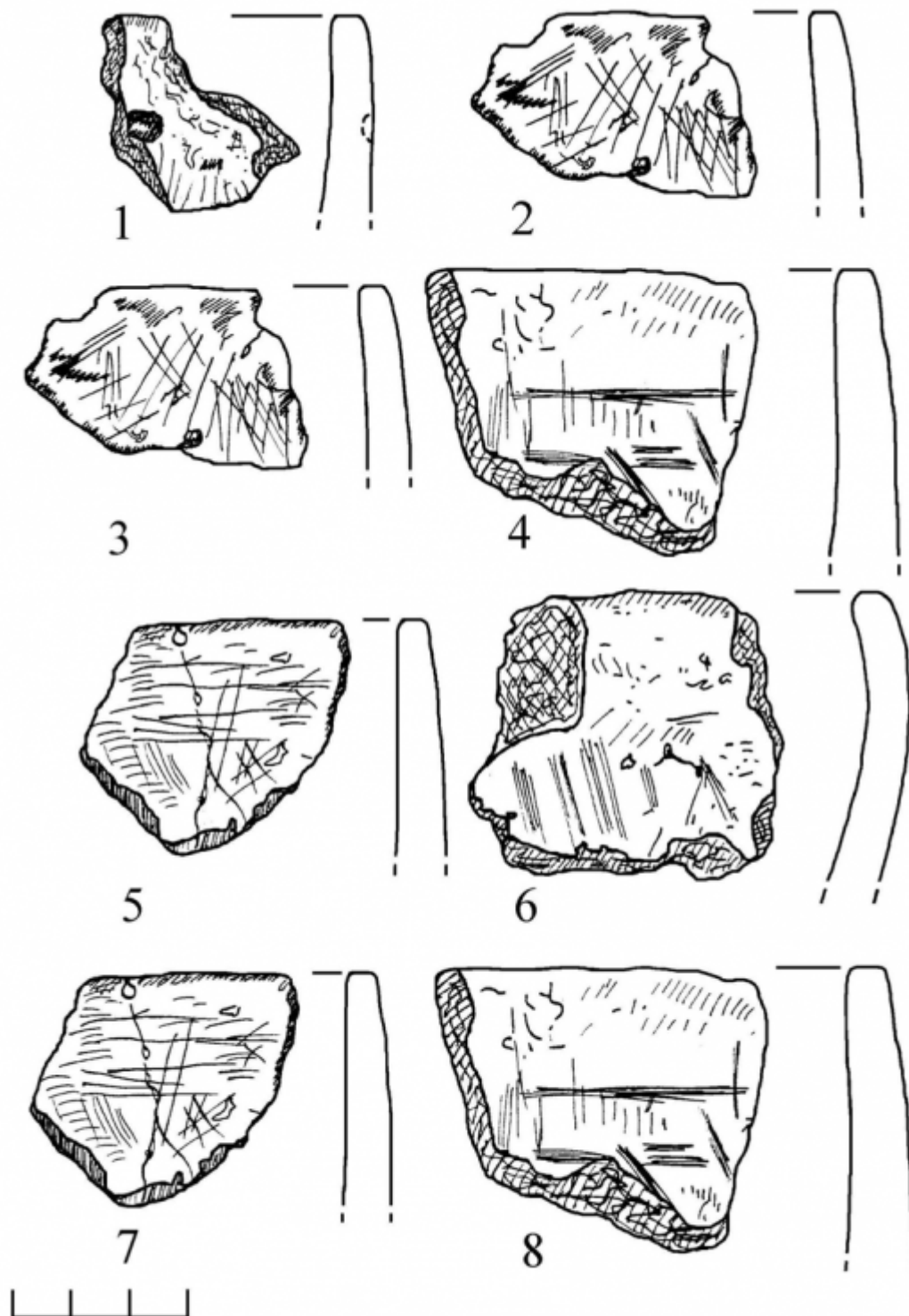


Figure 5:

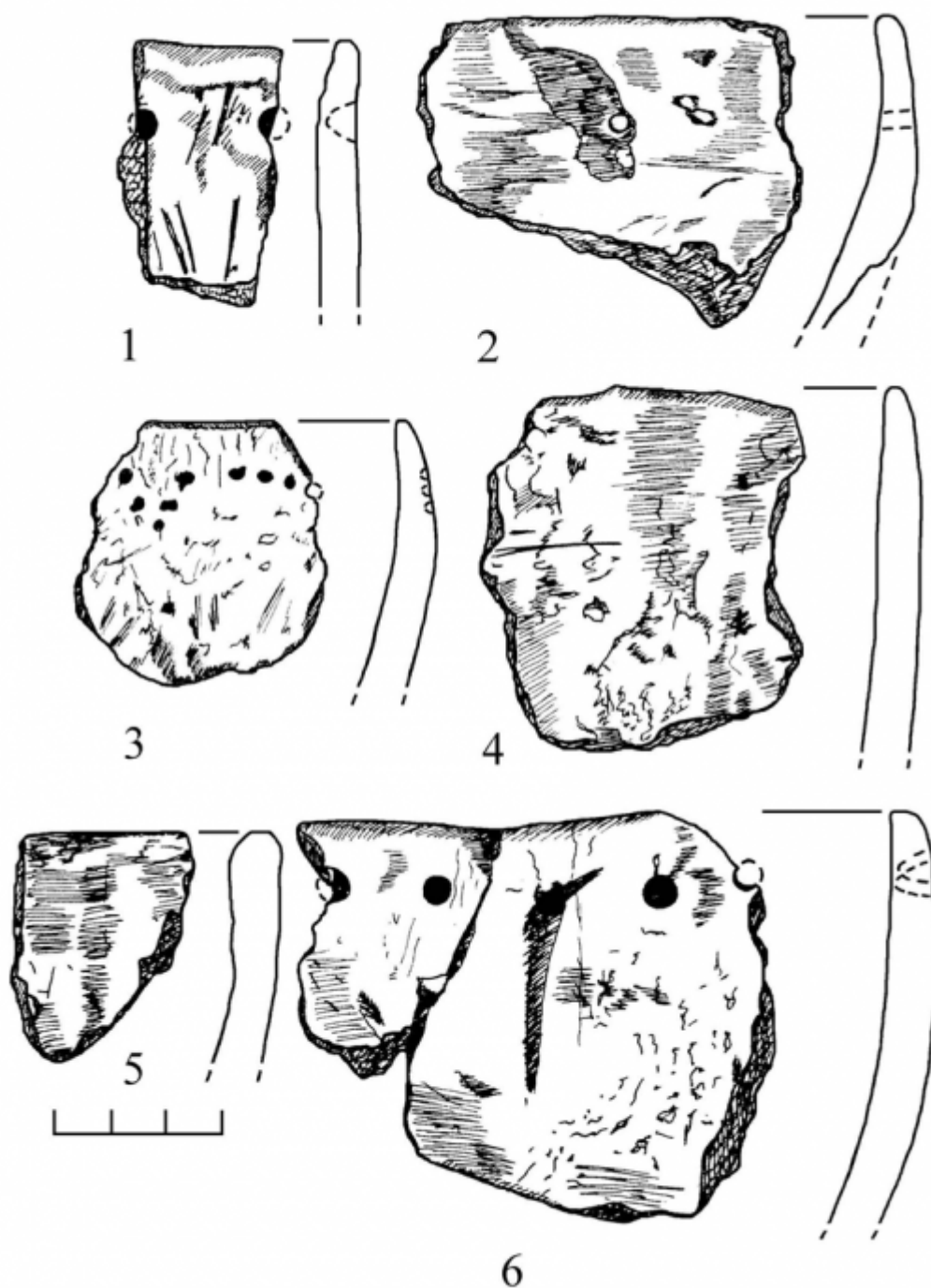


Figure 6:

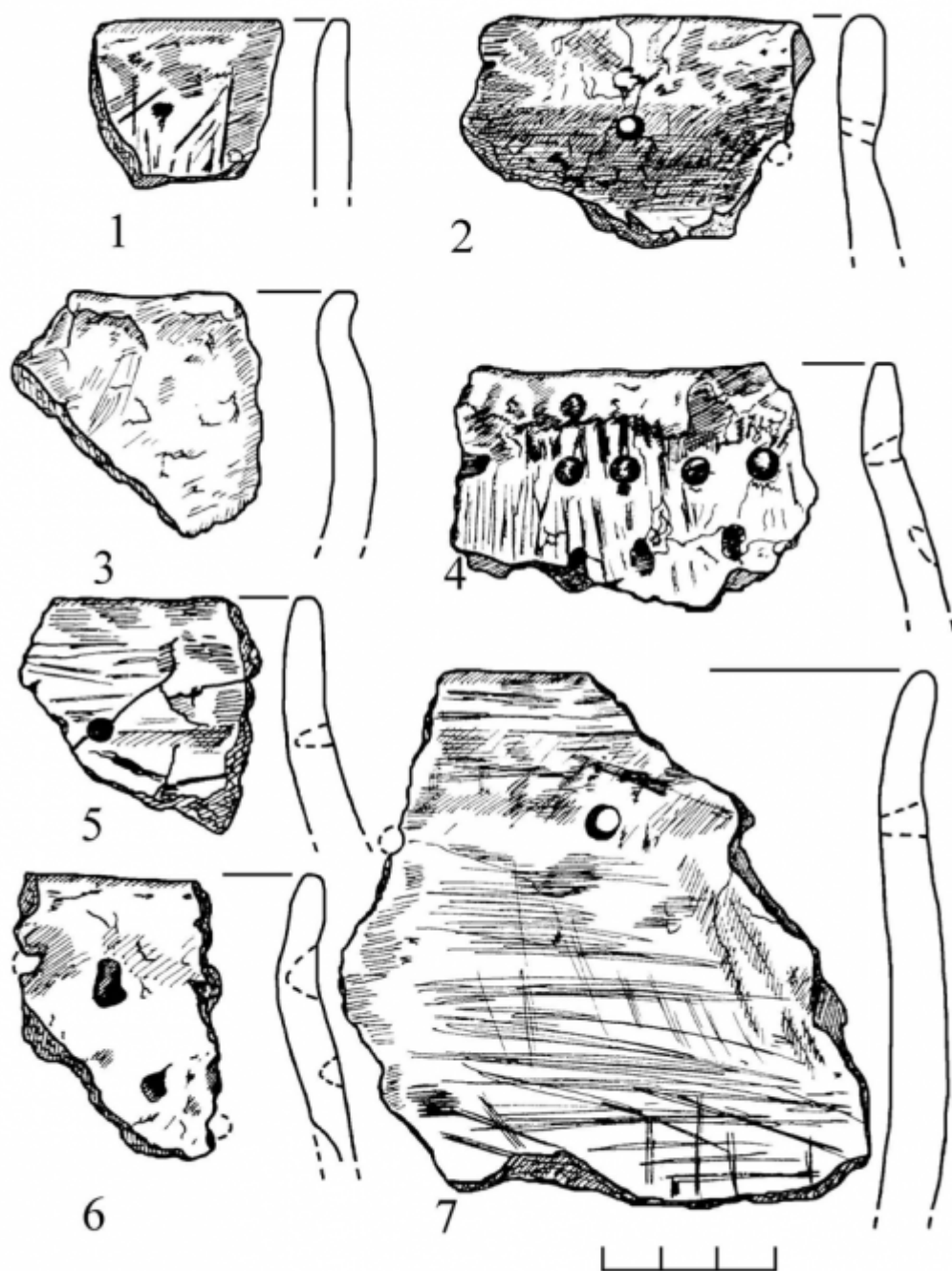
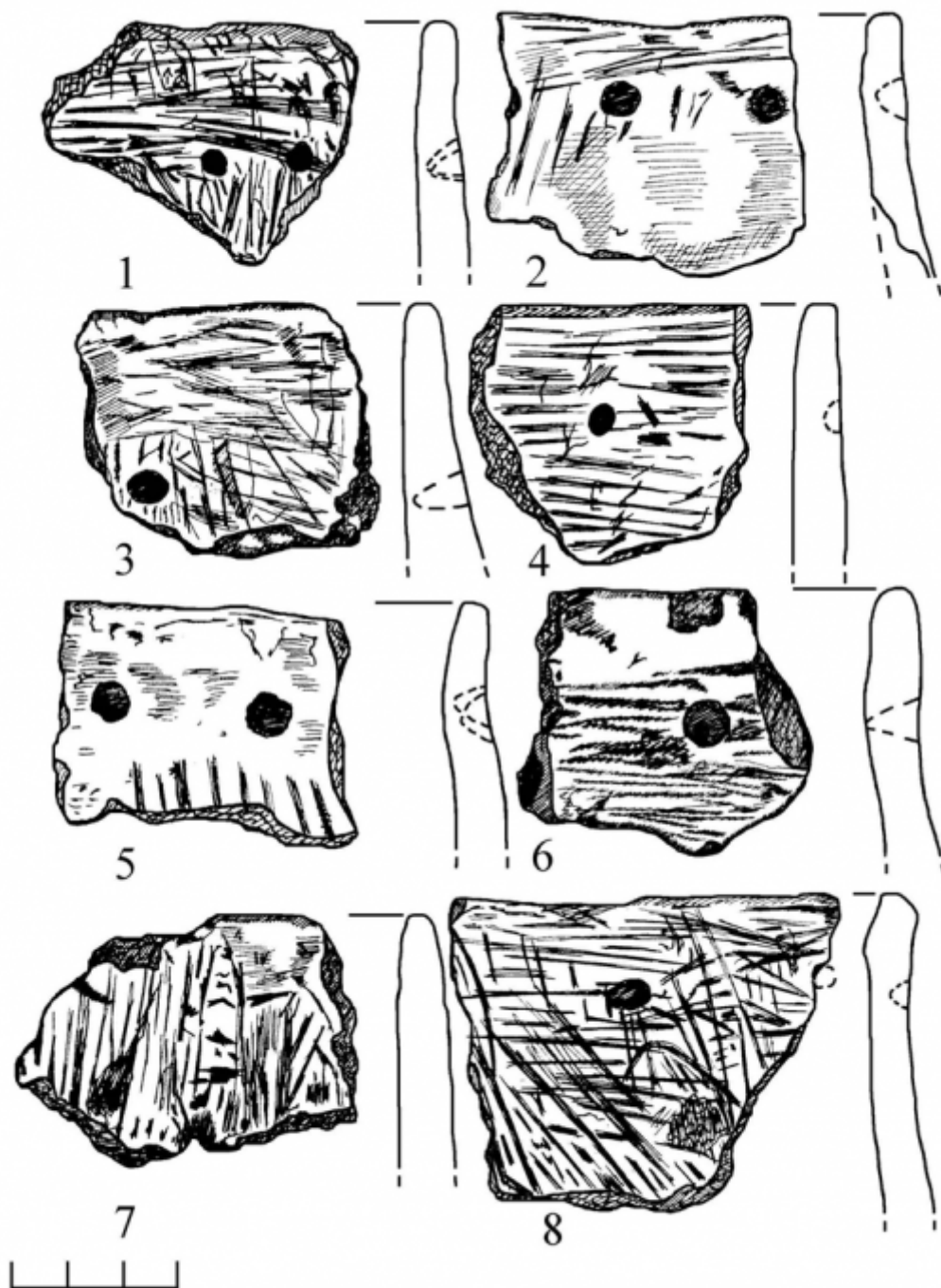


Figure 7: -



1

Figure 8: Figure 1 :

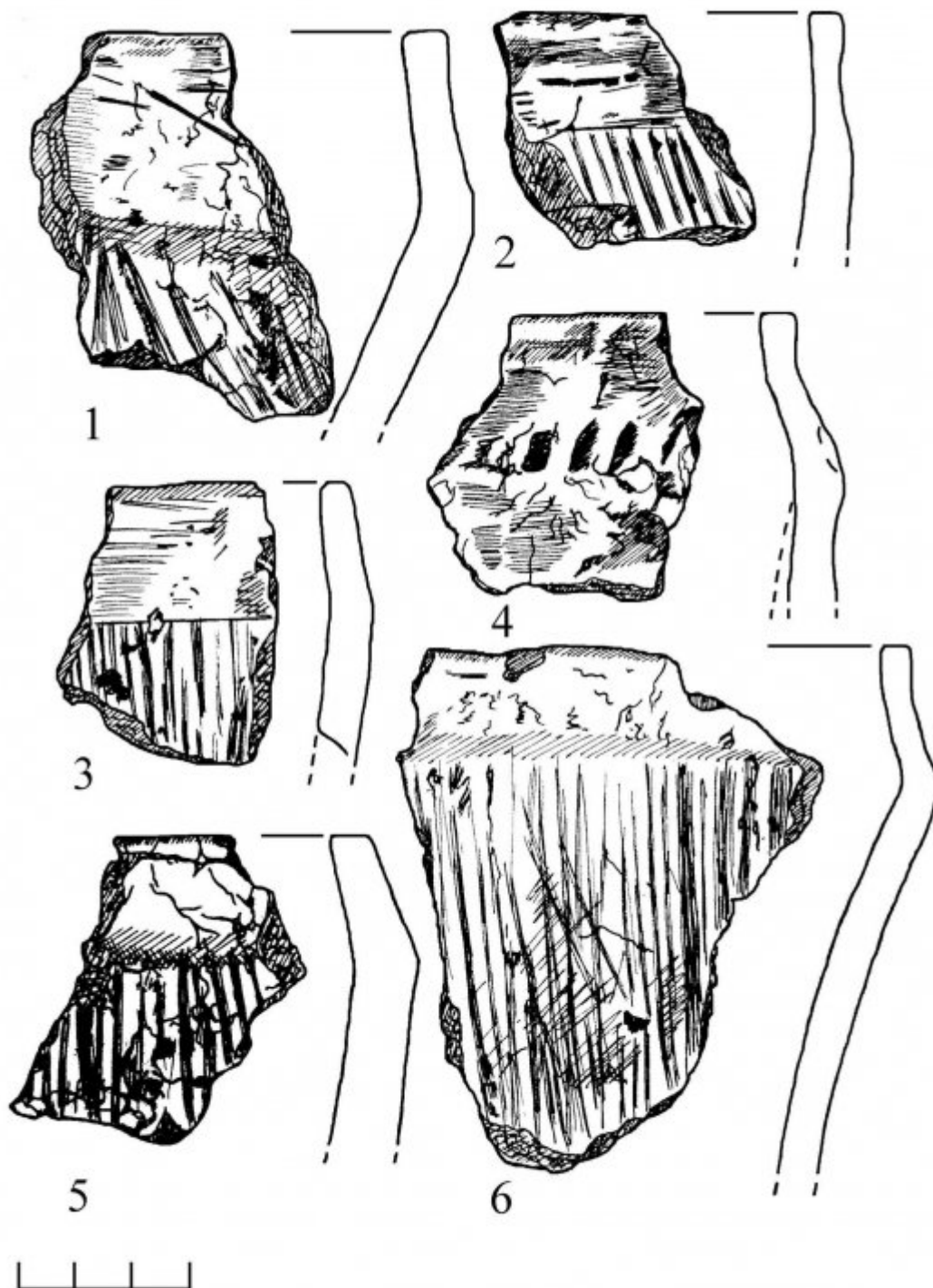


Figure 9: -

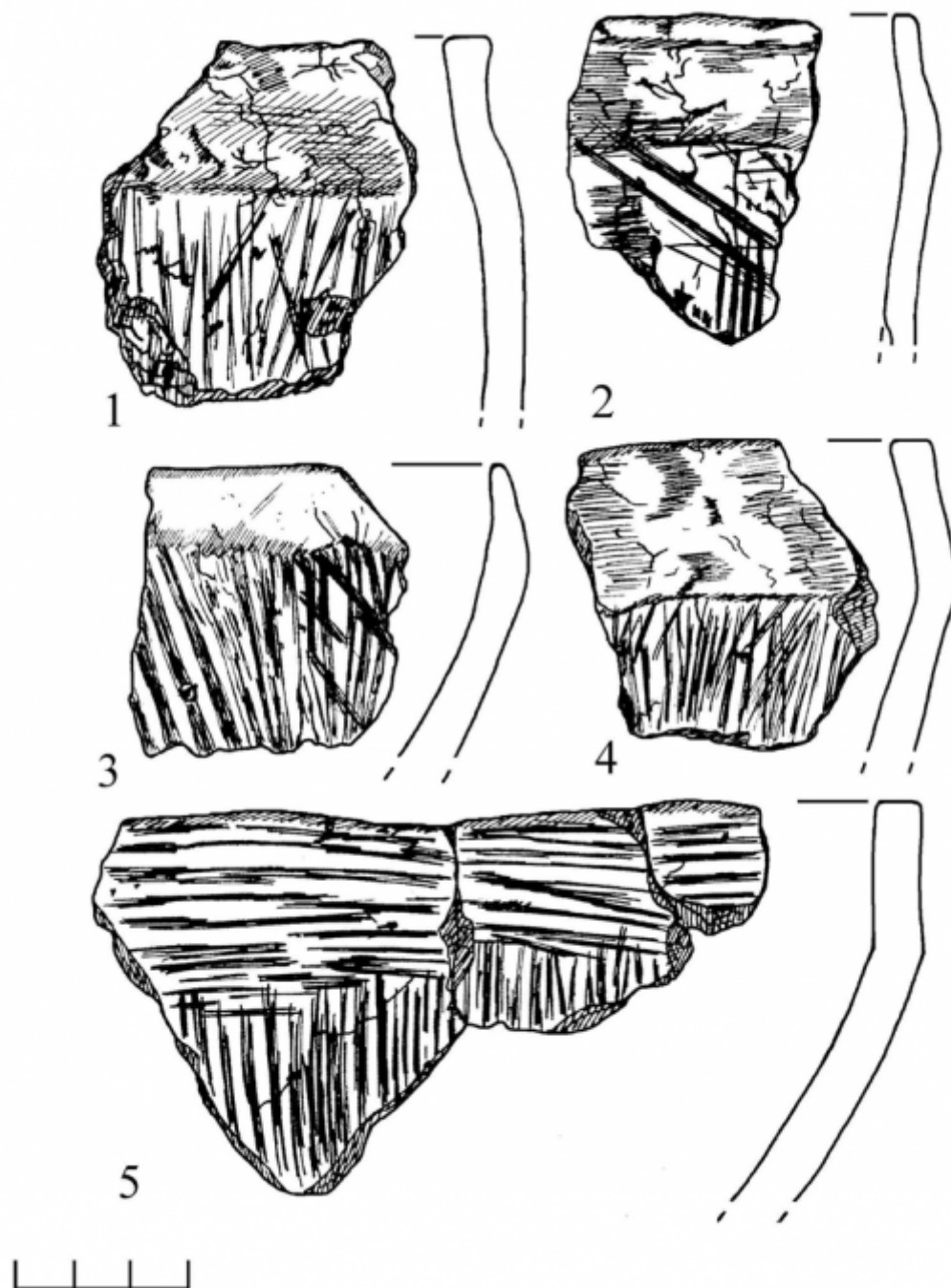


Figure 10: Figure 2 :

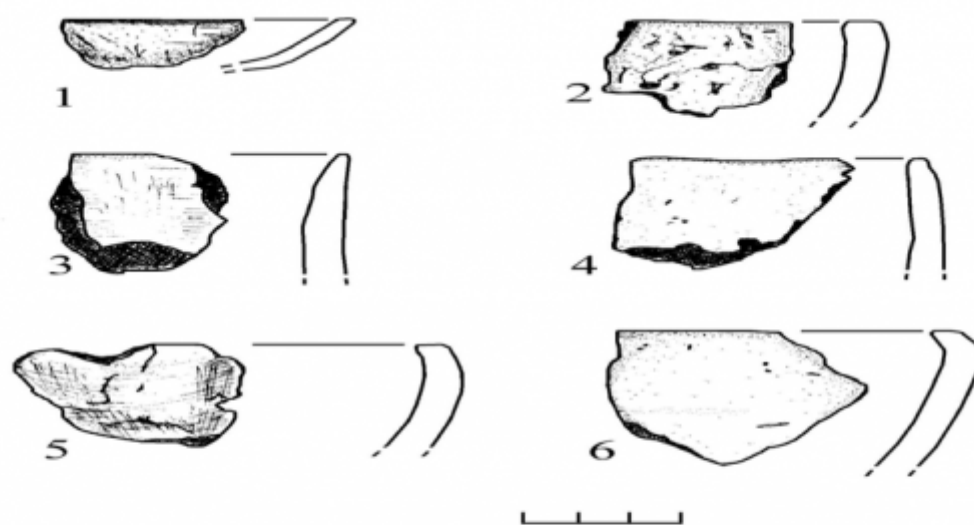
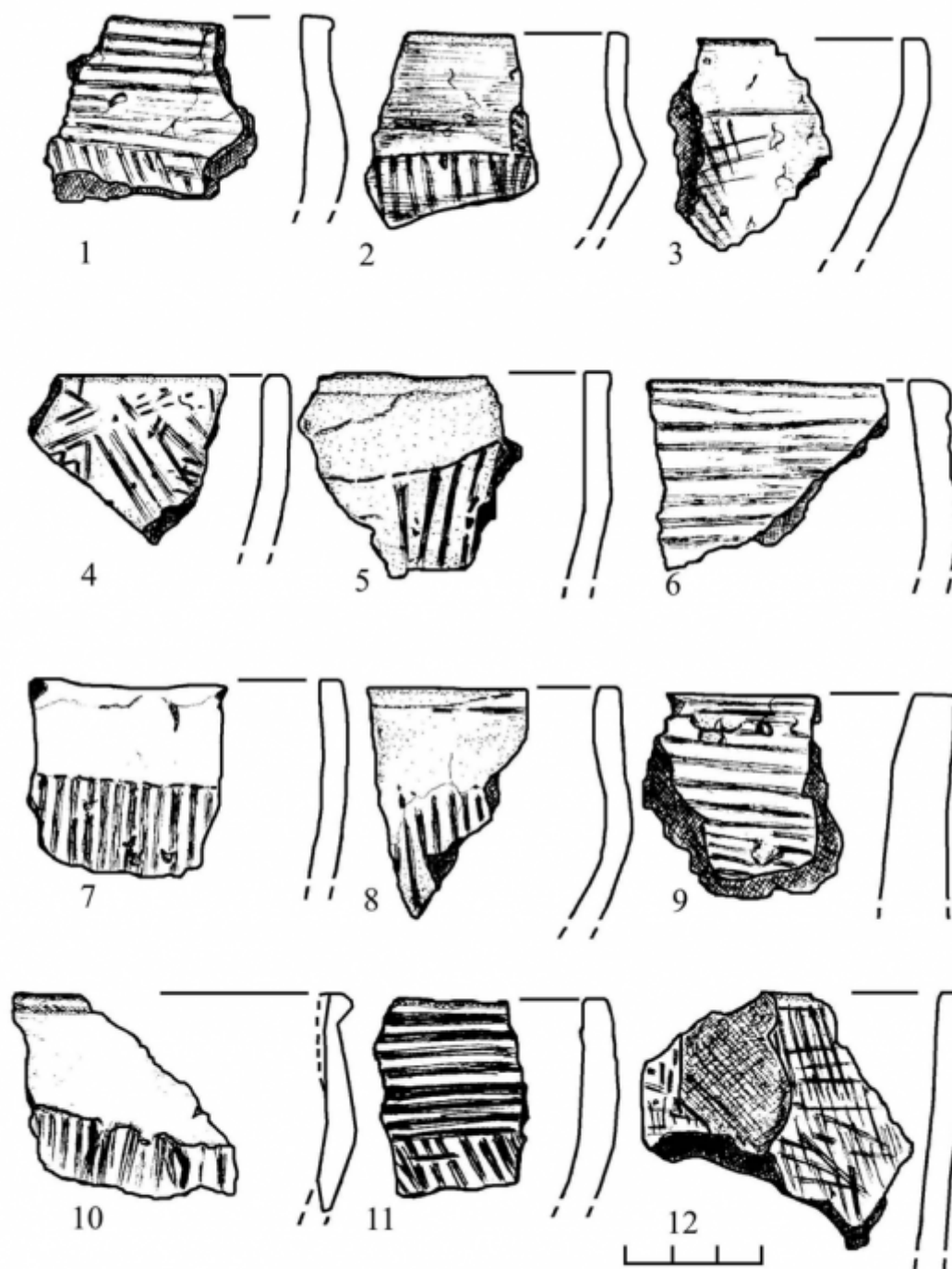


Figure 11: Figure 5 :-



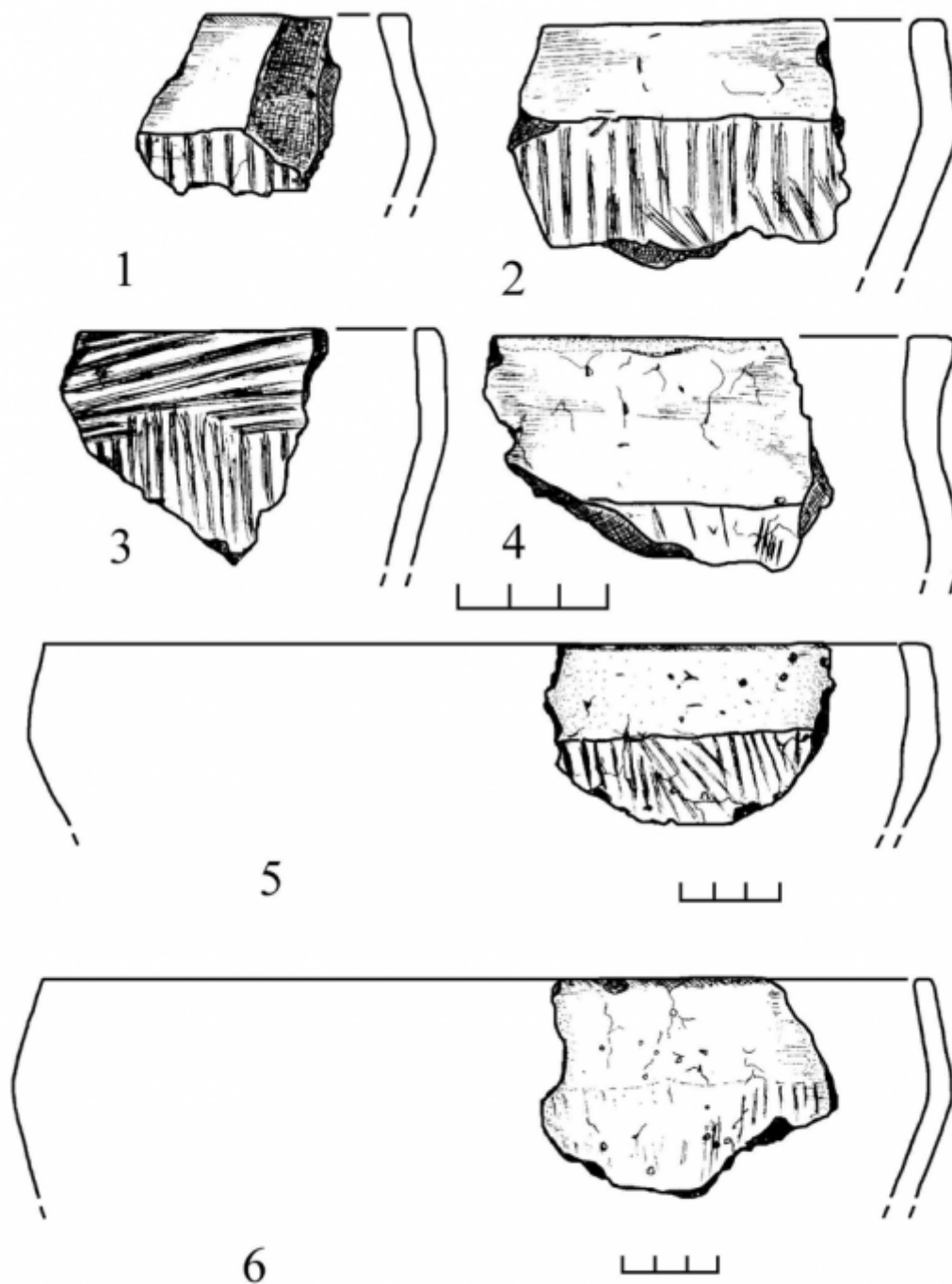


Figure 13: Figure 8 :

1

| Stratum | smooth | | | hatched | | coarse | plastered |
|---------|--------|----|---|---------|----|--------|-----------|
| | 1* | 2 | 1 | 2 | 3 | 1 | 1 |
| I | 16 | 2 | - | - | 2 | 3 | 1 |
| II | 29 | 2 | - | 2 | 4 | - | 2 |
| III | 44 | 4 | 2 | 1 | 8 | 9 | 1 |
| IV | 31 | 7 | 4 | - | 21 | - | 2 |
| V | 24 | 5 | 2 | 1 | 32 | 1 | - |
| VI | 15 | 6 | - | 1 | 22 | 1 | - |
| VII | 15 | 7 | - | 2 | 17 | - | - |
| VIII | 12 | 20 | 1 | - | 4 | - | - |
| IX | 3 | 2 | - | - | - | - | - |
| ? | 5 | 3 | - | - | - | - | - |
| Subsoil | 5 | 5 | - | 1 | 1 | - | - |
| In all | 199 | 63 | 8 | 8 | 48 | 14 | 6 |

Figure 14: Table 1 :

2

| Stratum | smooth | | | hatched | |
|---------|--------|-----|-----|---------|----|
| | 1* | 2 | 1 | 2 | 3 |
| I | 38 | 13 | 11 | - | 2 |
| II | 168 | 79 | 29 | 7 | 8 |
| III | 138 | 78 | 95 | 35 | 22 |
| IV | 87 | 58 | 88 | 40 | 26 |
| V | 33 | 14 | 57 | 20 | 4 |
| VI | 34 | 21 | 48 | 17 | - |
| VII | 2 | 4 | 12 | 9 | - |
| VIII | 3 | 3 | 10 | 6 | 1 |
| IX | 1 | 3 | 4 | 2 | - |
| Subsoil | 10 | 2 | 15 | 2 | - |
| In all | 514 | 275 | 369 | 138 | 63 |

[Note: *1 -jar-shaped, 2 -slightly-profiled, 3 -carinated vessels.]

Figure 15: Table 2 :

3

| Stratum | smooth | | | hatched | |
|---------|--------|---|----|---------|----|
| | 1* | 2 | 1 | 2 | 3 |
| I | 25 | 1 | 1 | - | 10 |
| II | 53 | 7 | 25 | 6 | 41 |
| III | 51 | 8 | 44 | 20 | 53 |
| IV | 29 | 8 | 31 | 15 | 57 |
| V | 18 | 3 | 18 | 6 | 27 |
| VI | 6 | 1 | 4 | 2 | 8 |
| VII | 7 | 1 | 3 | 7 | 26 |
| VIII | 6 | 1 | 7 | 2 | |

Figure 16: Table 3 :

4

| Stratum | smooth | | | hatched | |
|---------|--------|----|----|---------|-----|
| | 1* | 2 | 1 | 2 | 3 |
| I | 5 | 3 | 3 | - | 27 |
| II | 8 | 2 | 6 | - | 36 |
| III | 4 | 11 | 9 | - | 22 |
| IV | 13 | 2 | 1 | 4 | 128 |
| V | 5 | - | - | - | 37 |
| VI | 3 | - | 2 | 1 | 64 |
| VII | 1 | - | 1 | - | 27 |
| VIII | - | 1 | - | - | 7 |
| In All | 39 | 19 | 23 | 5 | 348 |

Figure 17: Table 4 :

Regarding about the Cultural Attribution of Hill Forts in Braslav
Poozerye
Bibliography

4. Medvedev A.M. 2002. Raskopki na gorodische
Ratjunki v 2000 g. W: M. Karczewska, M. Karczewski (red.).
Badania archeologiczne w Polsce Północno-Wschodniej i na Za-
chodniej Bia?orusi w latach 2000 -2001. Bia?ystok: Wydawnictwo
Uniwersytetu w Bia?ymstoku.

Year 2014
29
Volume XIV Is-
sue V Version I

D)
(
Global Journal
of Human So-
cial Science -

*[Note: Translated to English by MA Palina Kurlovich-Bialiauskaya The Russian version of this paper was published
in Stratum Plus Journal (????????? ??.? ? ?????????? ?????????? ?????????? ?????????? ??????????
// Stratum Plus. -2013. p. 159 -167)" in the beginning of the paper, because it is demanded by Stratum Plus
Journal Policy;]*

Figure 18:

- [H?starychna-arhealag?chny zborn?k] , *H?starychna-arhealag?chny zborn?k* 10 p. .
- [Medvedev et al.] , A M Medvedev , Voprosu O Finale Kultury Shtrihovannoj , Keramiki . *H?starychna-arhealag?chny zborn?k* 26 p. .
- [Pokrovsky ()] *Arheologicheskaya karta Kovenskoj gubernii. Trudy X arheologicheskogo s'ezda. T. 2. Riga*, F V Pokrovsky . 1899. p. .
- [Pokrovsky ()] *Arheologicheskaya karta Vilenskoj gubernii. Trudy Vilenskogo otdeleniya Moskovskogo predvaritelnogo komiteta po ustroistvu IX arheologicheskogo s'ezda. Otd. 2. Vilna*, F V Pokrovsky . 1893. p. .
- [Medvedev ()] 'Etnokulturnaya situaciya v basseine Vilii vo vtoroi chetverti I tys. n.e. (k voprosu o proishojdenii kultury vostochnolitovskih kurganov)'. A M Medvedev . *Materiali po archeologii Belarusi*, 2010. 19 p. .
- [Yegoreichenko ()] *Etnokulturnaya situaciya v Belorusskom Podvin'e v jeleznom veke*, A A Yegoreichenko . 1996.
- [Triet'jakov ()] *Finno-ugry, balty i slavianie na Dniepre i Volge*, P N Triet'jakov . 1966. Moskva -Leningrad: Nauka.
- [Duchic and Mitrofanov ()] *Gorodische Ratjunki. H?starychna-arhealag?chny zborn?k*, L V Duchic , A G Mitrofanov . 1996. 5 p. .
- [Mitrofanov ()] 'Jeleznyj vek srednei Belorussii (VII -VI vv'. A G Mitrofanov . *Minsk: Nauka i tehnika*, 1978.
- [Haritonovich ()] 'K voprosu o kulturnoj prinaladlnosti gorodisch Severo-Zapadnoj Belarusi'. Z A Haritonovich . *Materiali po archeologii Belarusi*15, 2008. p. .
- [Yegoreichenko ()] *Kultury shtrihovannoi keramiki*, A A Yegoreichenko . 2006. Minsk: BGU.
- [Medvedev ()] A M Medvedev . *Verhnee Poneman'e jeleznom veke i rannem srednevekove. Minsk: GNU "Institut istorii NAN Belarusi*, 2011.
- [Shadyro ()] *Rannij jeleznyj vek Severnoj Belorussii. Minsk: Nauka i Tehnika*, V I Shadyro . 1985.
- [Sedov ()] 'Slaviane Verhnego Podnieprov'ja i Podvinnia'. V V Sedov . *Nauka* 1970.